



Order: (888)-282-5810 (Phone)
(818)-707-0392 (Fax)
order@abiocode.com
Web: www.Abiocode.com

SETD1B (N) Antibody, Rabbit Polyclonal

Cat#: R3002-1

Quantity: 100 ul

Predicted | Observed M.W.: 215 | 260 kDa

Lot#: Refer to vial

Application: WB

Uniprot ID: Q8CFT2

Background:

Histone-lysine N-methyltransferase SETD1B is a histone methyltransferase that specifically methylates 'Lys-4' of histone H3 as part of the SET1 histone methyltransferase (HMT) complex, but not if the neighboring 'Lys-9' residue is already methylated. H3 'Lys-4' methylation represents a specific tag for epigenetic transcriptional activation. The non-overlapping localization with SETD1B suggests that SETD1A and SETD1B make non-redundant contributions to the epigenetic control of chromatin structure and gene expression.

Other Names:

Histone-lysine N-methyltransferase SETD1B, SET domain-containing protein 1B, Kiaa1076, Set1b

Source and Purity:

Rabbit polyclonal antibodies were produced by immunizing animals with a GST-fusion protein containing the C-terminal region of mouse SETD1B. Antibodies were purified by affinity purification using immunogen.

Storage Buffer and Condition:

Supplied in 1 x PBS (pH 7.4), 100 ug/ml BSA, 40% Glycerol, 0.01% NaN₃. Store at -20 °C. Stable for 6 months from date of receipt.

Species Specificity:

Human, Mouse

Tested Applications:

WB: 1:1,000-1:3,000 (detect endogenous protein*)

*: The apparent protein size on WB may be different from the calculated M.W. due to modifications.

Product Data:

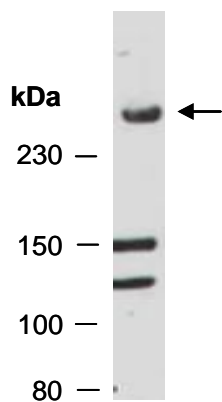


Fig 1. Western blot of total cell extracts from mouse brain; using anti-SETD1B (N) (R3002-1) at RT for 2 h.