



Order: (888)-282-5810 (Phone)
(818)-707-0392 (Fax)
order@abiocode.com
Web: www.Abiocode.com

COI1 (C2) Antibody, Rabbit Polyclonal

Cat#: R3410-2

Quantity: 100 ul

Predicted | Observed M.W.: 68 kDa

Lot#: Refer to vial

Application: WB

Uniprot ID: O04197

Background:

COI1 is required for jasmonate-regulated plant fertility and defense processes, and for coronatine and/or other elicitors perceptions/responses. COI1 is required for the regulation of some genes induced by wounding. COI1 is a component of SCF(COI1) E3 ubiquitin ligase complexes, which may mediate the ubiquitination and subsequent proteasomal degradation of target proteins (probably including the ribulose biphosphate carboxylase small chain 1B RBCS-1B and the histone deacetylase HDA6). These SCF complexes play crucial roles in regulating response to jasmonate, and their interactions with the COP9 signalosome (CSN) appear to be important for their activity. COI1 interacts with TIFY10A and inositol pentakisphosphate to form a high-affinity jasmonates coreceptor. COI1 is also involved in the regulation of plant gene expression during plant-pathogen interactions with *Pseudomonas syringae* and *Alternaria brassicicola*.

Other Names:

Coronatine-insensitive protein 1, F-box/LRR-repeat protein 2, AtCOI1, AtFBL2, FBL2, At2g39940, T28M21.10

Source and Purity:

Rabbit polyclonal antibodies were produced by immunizing animals with a GST-fusion protein containing the C-terminal region of *arabidopsis thaliana* COI1 (AT2G39940). Antibodies were purified by affinity purification using immunogen.

Storage Buffer and Condition:

Supplied in 1 x PBS (pH 7.4), 100 ug/ml BSA, 40% Glycerol, 0.01% NaN₃. Store at -20 °C. Stable for 6 months from date of receipt.

Tested Applications:

WB: 1:500-1:2,000 (detect endogenous protein*)

*: The apparent protein size on WB may be different from the calculated M.W. due to modifications.

Species Specificity:

Arabidopsis thaliana

Product Data:

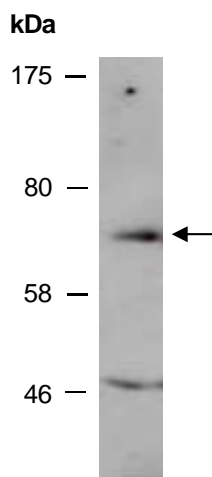


Fig 1. Western blot analysis of total protein extracts from wild type arabidopsis leaves, using anti-CO11 (C2) (R3410-2) at RT for 2 h.