



Order: (888)-282-5810 (Phone)
(818)-707-0392 (Fax)
order@abiocode.com
Web: www.Abiocode.com

CBF1 (C) Antibody, Rabbit Polyclonal

Cat#: R3411-2

Quantity: 100 ul

Predicted | Observed M.W.: 24 kDa

Lot#: Refer to vial

Application: WB

Uniprot ID: P93835

Background:

CBF1 is a transcriptional activator that binds specifically to the DNA sequence 5'-[AG]CCGAC-3'. Binding to the C-repeat/DRE element mediates cold-inducible transcription. CBF1 plays a key role in freezing tolerance and cold acclimation.

Other Names:

Dehydration-responsive element-binding protein 1B, Protein DREB1B, C-repeat/dehydration-responsive element-binding factor 1, C-repeat-binding factor 1, CRT/DRE-binding factor 1, ERF029, At4g25490, M7J2.140, ATCBF1

Source and Purity:

Rabbit polyclonal antibodies were produced by immunizing animals with a GST-fusion protein containing the C-terminal region of *arabidopsis thaliana* CBF1 (At4g25490). Antibodies were purified by affinity purification using immunogen.

Storage Buffer and Condition:

Supplied in 1 x PBS (pH 7.4), 100 ug/ml BSA, 40% Glycerol, 0.01% NaN₃. Store at -20 °C. Stable for 6 months from date of receipt.

Species Specificity:

Arabidopsis thaliana

Tested Applications:

WB: 1:500-1:2,000 (detect endogenous protein*)

*: The apparent protein size on WB may be different from the calculated M.W. due to modifications.

Product Data:

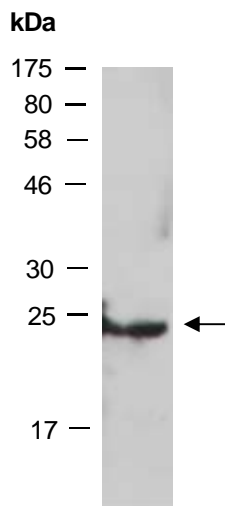


Fig 1. Western blot analysis of total protein extracts from wild type arabidopsis leaves, using anti-CBF1 (C) (R3411-2) at RT for 2 h.