



Order: (888)-282-5810 (Phone)
(818)-707-0392 (Fax)
order@abiocode.com
Web: www.Abiocode.com

DCL3 (C) Antibody, Rabbit Polyclonal

Cat#: R3413-2

Quantity: 100 ul

Predicted | Observed M.W.: 177 kDa

Lot#: Refer to vial

Application: WB

Uniprot ID: Q9LXW7

Background:

DCL3 is a ribonuclease (RNase) III involved in RNA-mediated post-transcriptional gene silencing (PTGS). DCL3 is involved in the processing of repeat-associated small interfering RNAs (ra-siRNAs, derived from heterochromatin and DNA repeats such as transposons) by cleaving small dsRNAs into 24 nucleotide ra-siRNAs. DCL3 plays a role in antiviral RNA silencing. DCL3 is involved in the production of viral siRNAs derived from the cabbage leaf curl virus (CaLCuV) and tobacco rattle virus (TRV). DCL3 can be targeted by the viral silencing suppressor (VSR) protein 2b of the cucumber mosaic virus (CMV) that inactivates DCL3 function in RNA silencing. DCL3 acts redundantly with DICER-LIKE 1 (DCL1) to promote flowering via repression of FLOWERING LOCUS C (FLC). DCL3 does not seem to be involved in microRNAs (miRNAs) processing.

Other Names:

Endoribonuclease Dicer homolog 3, Dicer-like protein 3, AtDCL3, At3g43920, T15B3.60

Source and Purity:

Rabbit polyclonal antibodies were produced by immunizing animals with a GST-fusion protein containing the C-terminal region of *arabidopsis thaliana* DCL3 (At3g43920). Antibodies were purified by affinity purification using immunogen.

Storage Buffer and Condition:

Supplied in 1 x PBS (pH 7.4), 100 ug/ml BSA, 40% Glycerol, 0.01% NaN₃. Store at -20 °C. Stable for 6 months from date of receipt.

Species Specificity:

Arabidopsis thaliana

Tested Applications:

WB: 1:500-1:2,000 (detect endogenous protein*)

*: The apparent protein size on WB may be different from the calculated M.W. due to modifications.

Product Data:

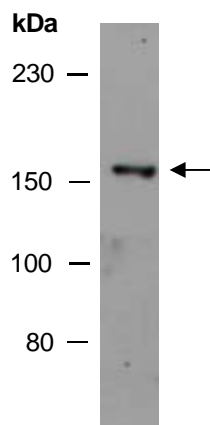


Fig 1. Western blot analysis of total protein extracts from wild type arabidopsis leaves, using anti-DCL3 (C) (R3413-2) at RT for 2 h.