



Order: (888)-282-5810 (Phone)  
(818)-707-0392 (Fax)  
[order@abiocode.com](mailto:order@abiocode.com)  
Web: [www.Abiocode.com](http://www.Abiocode.com)

---

## CLV1 (N) Antibody, Rabbit Polyclonal

**Cat#:** R3432-1

**Quantity:** 100 ul

**Predicted | Observed M.W.:** 108 kDa

**Lot#:** Refer to vial

**Application:** WB

**Uniprot ID:** Q9SYQ8

### Background:

CLV1 is involved in the detection of CLV3 and CLV3-like peptides that act as extracellular signals regulating meristem maintenance. CLV1 acts with CLV3 as a ligand-receptor pair in a signal transduction pathway coordinating growth between adjacent meristematic regions and controlling the balance between meristem cell proliferation and differentiation.

### Other Names:

Receptor protein kinase CLAVATA1, At1g75820, T4O12.5

### Source and Purity:

Rabbit polyclonal antibodies were produced by immunizing animals with a GST-fusion protein containing the N-terminal region of *arabidopsis thaliana* CLV1 (At1g75820). Antibodies were purified by affinity purification using immunogen.

### Storage Buffer and Condition:

Supplied in 1 x PBS (pH 7.4), 100 ug/ml BSA, 40% Glycerol, 0.01% NaN<sub>3</sub>. Store at -20 °C. Stable for 6 months from date of receipt.

### Species Specificity:

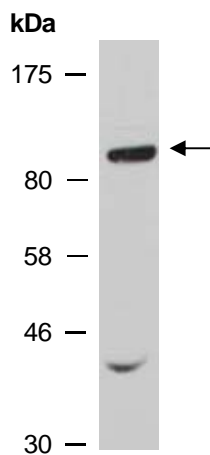
*Arabidopsis thaliana*

### Tested Applications:

WB: 1:500-1:2,000 (detect endogenous protein\*)

\*: The apparent protein size on WB may be different from the calculated M.W. due to modifications.

**Product Data:**



**Fig 1.** Western blot analysis of total protein extracts from wild type arabidopsis leaves, using anti-CLV1 (N) (R3432-1) at RT for 2 h.