



Order: (888)-282-5810 (Phone)
(818)-707-0392 (Fax)
order@abiocode.com
Web: www.Abiocode.com

NFATC2 (N) Antibody, Rabbit Polyclonal

Cat#: R1396-1

Quantity: 100 ul

Predicted | Observed M.W.: 100 | 130 kDa

Lot#: Refer to vial

Application: WB

Uniprot ID: Q13469

Background:

Nuclear factor of activated T-cells, cytoplasmic 2 (NFATC2) plays a role in the inducible expression of cytokine genes in T-cells, especially in the induction of the IL-2, IL-3, IL-4, TNF-alpha or GM-CSF. NFATC2 promotes invasive migration through the activation of GPC6 expression and WNT5A signaling pathway.

Other Names:

Nuclear factor of activated T-cells, cytoplasmic 2, NFAT1, NFATP, NF-ATc2, NFATc2, NFAT pre-existing subunit, NF-ATp

Source and Purity:

Rabbit polyclonal antibodies were produced by immunizing animals with a GST-fusion protein containing the N-terminal region of human NFATC2. Antibodies were purified by affinity purification using immunogen.

Storage Buffer and Condition:

Supplied in 1 x PBS (pH 7.4), 100 ug/ml BSA, 40% Glycerol, 0.01% NaN₃. Store at -20 °C. Stable for 6 months from date of receipt.

Species Specificity:

Human, Mouse

Tested Applications:

WB: 1:1,000-1:3,000 (detect endogenous protein*)

*: The apparent protein size on WB may be different from the calculated M.W. due to modifications.

Product Data:

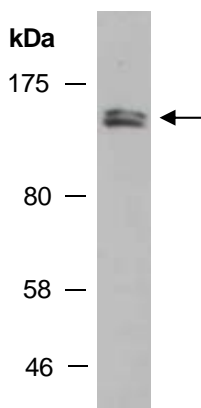


Fig 1. Western blot of total cell extracts from mouse thymus; using anti-NFATC2 (N) (R1396-1) at RT for 2 h.