



Order: (888)-282-5810 (Phone)
(818)-707-0392 (Fax)
order@abiocode.com
Web: www.Abiocode.com

AFF1 (C) Antibody, Rabbit Polyclonal

Cat#: R2802-2

Quantity: 100 ul

Predicted | Observed M.W.: 131 kDa

Lot#: Refer to vial

Application: WB

Uniprot ID: P51825

Background:

AF4/FMR2 family member 1 (AFF1) belongs to the AF4 family and is a component of the super elongation complex (SEC), at least composed of EAF1, MLLT3/AF9, AFF (AFF1 or AFF4), the P-TEFb complex and ELL (ELL, ELL2 or ELL3).

Other Names:

AF4/FMR2 family member 1, AF4, FEL, MLLT2, PBM1, ALL1-fused gene from chromosome 4 protein, Protein AF-4, Protein FEL, Proto-oncogene AF4

Source and Purity:

Rabbit polyclonal antibodies were produced by immunizing animals with a GST-fusion protein containing the C-terminal region of human AFF1. Antibodies were purified by affinity purification using immunogen.

Storage Buffer and Condition:

Supplied in 1 x PBS (pH 7.4), 100 ug/ml BSA, 40% Glycerol, 0.01% NaN₃. Store at -20 °C. Stable for 6 months from date of receipt.

Species Specificity:

Human, Mouse

Tested Applications:

WB: 1:1,000-1:3,000 (detect endogenous protein*)

*: The apparent protein size on WB may be different from the calculated M.W. due to modifications.

Product Data:

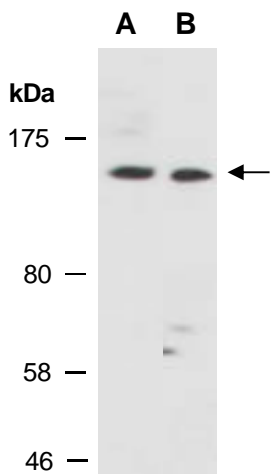


Fig 1. Western blot of total cell extracts from A) mouse thymus, B) human Jurkat, using anti-AFF1 (C) (R2802-2) at RT for 2 h.