



Order: (888)-282-5810 (Phone)
(818)-707-0392 (Fax)
order@abiocode.com
Web: www.Abiocode.com

DLG4 (N) Antibody, Rabbit Polyclonal

Cat#: R2860-1

Quantity: 100 ul

Predicted | Observed M.W.: 115 kDa

Lot#: Refer to vial

Application: WB

Uniprot ID: Q15334

Background:

Lethal(2) giant larvae protein homolog 1 (DLG4) belongs to the WD repeat L(2)GL family and is a cortical cytoskeleton protein found in a complex involved in maintaining cell polarity and epithelial integrity. DLG4 is involved in the regulation of mitotic spindle orientation, proliferation, differentiation and tissue organization of neuroepithelial cells. DLG4 is also involved in axonogenesis through RAB10 activation thereby regulating vesicular membrane trafficking toward the axonal plasma membrane.

Other Names:

Lethal(2) giant larvae protein homolog 1, LLGL1, LLGL DLG4, HUGL, HUGL1, Human homolog to the D-lgl gene protein

Source and Purity:

Rabbit polyclonal antibodies were produced by immunizing animals with a GST-fusion protein containing the N-terminal region of human DLG4. Antibodies were purified by affinity purification using immunogen.

Storage Buffer and Condition:

Supplied in 1 x PBS (pH 7.4), 100 ug/ml BSA, 40% Glycerol, 0.01% NaN₃. Store at -20 °C. Stable for 6 months from date of receipt.

Species Specificity:

Human, Mouse

Tested Applications:

WB: 1:1,000-1:3,000 (detect endogenous protein*)

*: The apparent protein size on WB may be different from the calculated M.W. due to modifications.

Product Data:

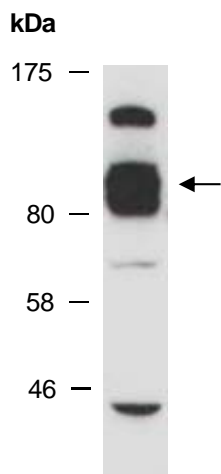


Fig 1. Western blot of total cell extracts from mouse brain; using anti-DLG4 (N) (R2860-1) at RT for 2 h.