



Order: (888)-282-5810 (Phone)  
(818)-707-0392 (Fax)  
[order@abiocode.com](mailto:order@abiocode.com)  
Web: [www.Abiocode.com](http://www.Abiocode.com)

---

## **IREB2 (N) Antibody, Rabbit Polyclonal**

**Cat#: R2886-1**

**Quantity: 100 ul**

**Predicted | Observed M.W.: 105 kDa**

**Lot#: Refer to vial**

**Application: WB**

**Uniprot ID: P48200**

### **Background:**

Iron-responsive element-binding protein 2 (IREB2) is an RNA-binding protein that belongs to the aconitase/IPM isomerase family. IREB2 binds to iron-responsive elements (IRES), which are stem-loop structures found in the 5'-UTR of ferritin, and delta aminolevulinic acid synthase mRNAs, and in the 3'-UTR of transferrin receptor mRNA.

### **Other Names:**

Iron-responsive element-binding protein 2, IRE-BP 2, Iron regulatory protein 2, IRP2

### **Source and Purity:**

Rabbit polyclonal antibodies were produced by immunizing animals with a GST-fusion protein containing the N-terminal region of human IREB2. Antibodies were purified by affinity purification using immunogen.

### **Storage Buffer and Condition:**

Supplied in 1 x PBS (pH 7.4), 100 ug/ml BSA, 40% Glycerol, 0.01% NaN<sub>3</sub>. Store at -20 °C. Stable for 6 months from date of receipt.

### **Species Specificity:**

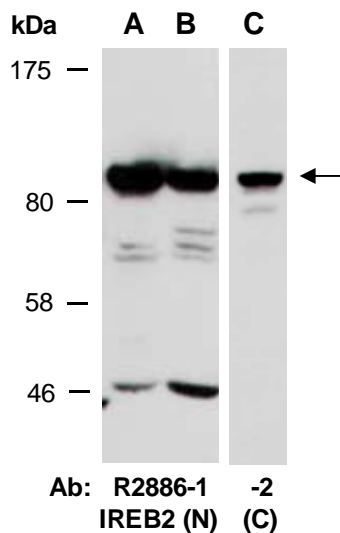
Human

### **Tested Applications:**

WB: 1:1,000-1:3,000 (detect endogenous protein\*)

\*: The apparent protein size on WB may be different from the calculated M.W. due to modifications.

**Product Data:**



**Fig 1.** Western blot of total cell extracts from A, C) human HeLa; B) human Jurkat; using 2 independent Abs against 2 distinct regions of human IREB2 at RT for 2 h.