



Order: (888)-282-5810 (Phone)
(818)-707-0392 (Fax)
order@abiocode.com
Web: www.Abiocode.com

IREB2 (C) Antibody, Rabbit Polyclonal

Cat#: R2886-2

Quantity: 100 ul

Predicted | Observed M.W.: 105 kDa

Lot#: Refer to vial

Application: WB

Uniprot ID: P48200

Background:

Iron-responsive element-binding protein 2 (IREB2) is an RNA-binding protein that belongs to the aconitase/IPM isomerase family. IREB2 binds to iron-responsive elements (IRES), which are stem-loop structures found in the 5'-UTR of ferritin, and delta aminolevulinic acid synthase mRNAs, and in the 3'-UTR of transferrin receptor mRNA.

Other Names:

Iron-responsive element-binding protein 2, IRE-BP 2, Iron regulatory protein 2, IRP2

Source and Purity:

Rabbit polyclonal antibodies were produced by immunizing animals with a GST-fusion protein containing the C-terminal region of human IREB2. Antibodies were purified by affinity purification using immunogen.

Storage Buffer and Condition:

Supplied in 1 x PBS (pH 7.4), 100 ug/ml BSA, 40% Glycerol, 0.01% NaN₃. Store at -20 °C. Stable for 6 months from date of receipt.

Species Specificity:

Human

Tested Applications:

WB: 1:1,000-1:3,000 (detect endogenous protein*)

*: The apparent protein size on WB may be different from the calculated M.W. due to modifications.

Product Data:

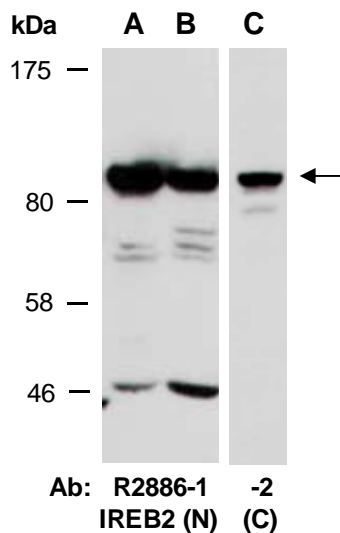


Fig 1. Western blot of total cell extracts from A, C) human HeLa; B) human Jurkat; using 2 independent Abs against 2 distinct regions of human IREB2 at RT for 2 h.