



Order: (888)-282-5810 (Phone)
(818)-707-0392 (Fax)
order@abiocode.com
Web: www.Abiocode.com

IREB2 (vPair™) Antibodies

Cat#: R2886-vp

Lot#: Refer to vial

Predicted | Observed M.W.: 105 kDa

Uniprot ID: P48200

Application: WB

Quantity: 50 ul IREB2 (N) (R2886-1) Rabbit Polyclonal Antibody &
50 ul IREB2 (C) (R2886-2) Rabbit Polyclonal Antibody

Product Introduction:

vPair™ antibodies represent a pair of fully characterized antibodies that recognize two different regions of a target protein. The product is developed by Abiocode to address whether the signal observed truly represents the protein of interest, an often encountered issue in antibody-based assays. The use of a pair of fully characterized vPair™ antibodies in the same assay can validate signal specificity since vPair™ antibodies recognize two independent epitopes of the same protein. Different sets of vPair™ antibodies are developed at Abiocode to work with specific applications, including antibody arrays, Western blot, IP-Western, CHIP, IHC, and FACS.

Background:

Iron-responsive element-binding protein 2 (IREB2) is an RNA-binding protein that belongs to the aconitase/IPM isomerase family. IREB2 binds to iron-responsive elements (IRES), which are stem-loop structures found in the 5'-UTR of ferritin, and delta aminolevulinic acid synthase mRNAs, and in the 3'-UTR of transferrin receptor mRNA.

Other Names:

Iron-responsive element-binding protein 2, IRE-BP 2, Iron regulatory protein 2, IRP2

Source and Purity:

Rabbit polyclonal antibodies were produced by immunizing animals with a GST-fusion protein containing the C-terminal region of human IREB2. Antibodies were purified by affinity purification using immunogen.

Storage Buffer and Condition:

Supplied in 1 x PBS (pH 7.4), 100 ug/ml BSA, 40% Glycerol, 0.01% NaN₃. Store at -20 °C. Stable for 6 months from date of receipt.

Species Specificity:

Human

Tested Applications:

WB: 1:1,000-1:3,000 (detect endogenous protein*)

*: The apparent protein size on WB may be different from the calculated M.W. due to modifications.

Product Data:

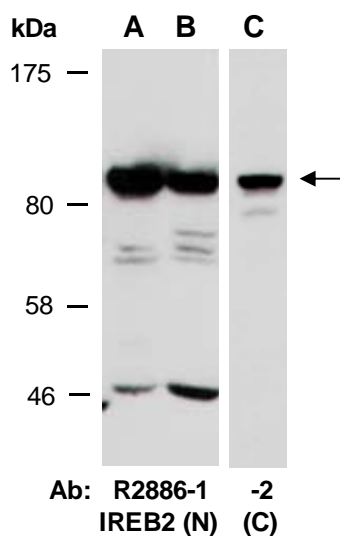


Fig 1. Western blot of total cell extracts from A, C) human HeLa; B) human Jurkat; using 2 independent Abs against 2 distinct regions of human IREB2 at RT for 2 h.