



Order: (888)-282-5810 (Phone)  
(818)-707-0392 (Fax)  
[order@abiocode.com](mailto:order@abiocode.com)  
Web: [www.Abiocode.com](http://www.Abiocode.com)

---

## **WNK1 (C) Antibody, Rabbit Polyclonal**

**Cat#: R1268-2**

**Quantity: 100 ul**

**Predicted | Observed M.W.: 251 kDa**

**Lot#: Refer to vial**

**Application: WB**

**Uniprot ID: Q9H4A3**

### **Background:**

Serine/threonine-protein kinase WNK1 belongs to the protein kinase superfamily, the Ser/Thr protein kinase family, and the WNK subfamily. WNK1 is a serine/threonine kinase which plays an important role in the regulation of electrolyte homeostasis, cell signaling, survival, and proliferation. WNK1 acts as an activator and inhibitor of sodium-coupled chloride cotransporters and potassium-coupled chloride cotransporters respectively.

### **Other Names:**

Serine/threonine-protein kinase WNK1, Erythrocyte 65 kDa protein, p65, Kinase deficient protein, Protein kinase lysine-deficient 1, Protein kinase with no lysine 1, hWNK1, HSN2, KDP, KIAA0344, PRKWNK1

### **Source and Purity:**

Rabbit polyclonal antibodies were produced by immunizing animals with a GST-fusion protein containing the C-terminal region of human WNK1. Antibodies were purified by affinity purification using immunogen.

### **Storage Buffer and Condition:**

Supplied in 1 x PBS (pH 7.4), 100 ug/ml BSA, 40% Glycerol, 0.01% NaN<sub>3</sub>. Store at -20 °C. Stable for 6 months from date of receipt.

### **Species Specificity:**

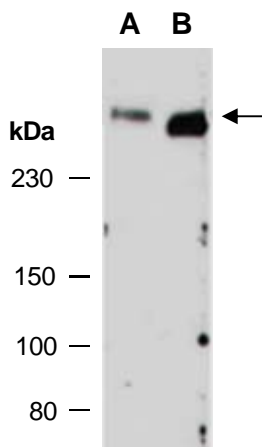
Human, Mouse

### **Tested Applications:**

WB: 1:1,000-1:3,000 (detect endogenous protein\*)

\*: The apparent protein size on WB may be different from the calculated M.W. due to modifications.

**Product Data:**



**Fig 1.** Western blot of total cell extracts from A) mouse thymus, B) human Jurkat; using anti-WNK1 (C) (R1268-2) at RT for 2 h.