



Order: (888)-282-5810 (Phone)
(818)-707-0392 (Fax)
order@abiocode.com
Web: www.Abiocode.com

ELF3 (C) Antibody, Rabbit Polyclonal

Cat#: R2443-2

Quantity: 100 ul

Predicted | Observed M.W.: 41 kDa

Lot#: Refer to vial

Application: WB

Uniprot ID: P78545

Background:

ETS-related transcription factor Elf-3 (ELF3) belongs to the ETS family. ELF3 is a transcriptional activator that binds and transactivates ETS sequences containing the consensus nucleotide core sequence GGA[AT]. ELF3 acts synergistically with POU2F3 to transactivate the SPRR2A promoter and with RUNX1 to transactivate the ANGPT1 promoter.

Other Names:

ETS-related transcription factor Elf-3, E74-like factor 3, Epithelial-restricted with serine box, Epithelium-restricted Ets protein ESX, Epithelium-specific Ets transcription factor 1, ESE-1, ERT, ESX, JEN

Source and Purity:

Rabbit polyclonal antibodies were produced by immunizing animals with a GST-fusion protein containing the C-terminal region of human ELF3. Antibodies were purified by affinity purification using immunogen.

Storage Buffer and Condition:

Supplied in 1 x PBS (pH 7.4), 100 ug/ml BSA, 40% Glycerol, 0.01% NaN₃. Store at -20 °C. Stable for 6 months from date of receipt.

Species Specificity:

Human, Mouse

Tested Applications:

WB: 1:1,000-1:3,000 (detect endogenous protein*)

*: The apparent protein size on WB may be different from the calculated M.W. due to modifications.

Product Data:

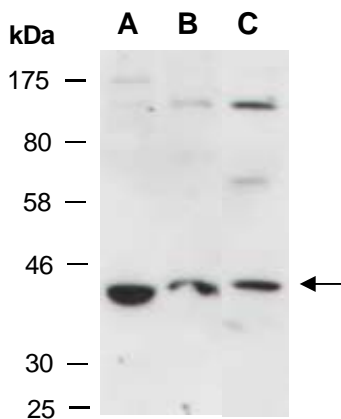


Fig 1. Western blot of total cell extracts from A) mouse brain, B) mouse thymus, C) human Jurkat; using anti-ELF3 (C) (R2443-2) at RT for 2 h.