



Order: (888)-282-5810 (Phone)  
(818)-707-0392 (Fax)  
[order@abiocode.com](mailto:order@abiocode.com)  
Web: [www.Abiocode.com](http://www.Abiocode.com)

---

## **DLG1 (N1) Antibody, Rabbit Polyclonal**

**Cat#: R2447-1**

**Quantity: 100 ul**

**Predicted | Observed M.W.: 100 kDa**

**Lot#: Refer to vial**

**Application: WB**

**Uniprot ID: Q12959**

### **Background:**

Disks large homolog 1 (DLG1) is a peripheral membrane protein belonging to the MAGUK family. DLG1 is an essential multidomain scaffolding protein required for normal development. DLG1 recruits channels, receptors and signaling molecules to discrete plasma membrane domains in polarized cells. Additionally, DLG1 may play a role in adherens junction assembly, signal transduction, cell proliferation, synaptogenesis and lymphocyte activation.

### **Other Names:**

Disks large homolog 1, Synapse-associated protein 97, SAP-97, SAP97, hDlg

### **Source and Purity:**

Rabbit polyclonal antibodies were produced by immunizing animals with a GST-fusion protein containing the N-terminal region of human DLG1. Antibodies were purified by affinity purification using immunogen.

### **Storage Buffer and Condition:**

Supplied in 1 x PBS (pH 7.4), 100 ug/ml BSA, 40% Glycerol, 0.01% NaN<sub>3</sub>. Store at -20 °C. Stable for 6 months from date of receipt.

### **Species Specificity:**

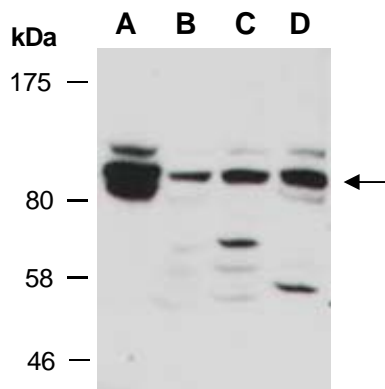
Human, Mouse

### **Tested Applications:**

WB: 1:1,000-1:3,000 (detect endogenous protein\*)

\*: The apparent protein size on WB may be different from the calculated M.W. due to modifications.

**Product Data:**



**Fig 1.** Western blot of total cell extracts from A) mouse brain, B) mouse thymus, C) human HeLa, D) human Jurkat; using anti-DLG1 (N1) (R2447-1) at RT for 2 h.