



Order: (888)-282-5810 (Phone)
(818)-707-0392 (Fax)
order@abiocode.com
Web: www.Abiocode.com

RAB7A (C) Antibody, Rabbit Polyclonal

Cat#: R2460-2

Quantity: 100 ul

Predicted | Observed M.W.: 23 | 26 kDa

Lot#: Refer to vial

Application: WB

Uniprot ID: P51149

Background:

Ras-related protein Rab-7a (RAB7A) belongs to the small GTPase superfamily and the Rab family. RAB7A is a key regulator in endo-lysosomal trafficking. RAB7A governs early-to-late endosomal maturation, microtubule minus-end as well as plus-end directed endosomal migration and positioning, and endosome-lysosome transport through different protein-protein interaction cascades.

Other Names:

Ras-related protein Rab-7a, RAB7

Source and Purity:

Rabbit polyclonal antibodies were produced by immunizing animals with a GST-fusion protein containing the C-terminal region of human RAB7A. Antibodies were purified by affinity purification using immunogen.

Storage Buffer and Condition:

Supplied in 1 x PBS (pH 7.4), 100 ug/ml BSA, 40% Glycerol, 0.01% NaN₃. Store at -20 °C. Stable for 6 months from date of receipt.

Species Specificity:

Human

Tested Applications:

WB: 1:1,000-1:3,000 (detect endogenous protein*)

*: The apparent protein size on WB may be different from the calculated M.W. due to modifications.

Product Data:

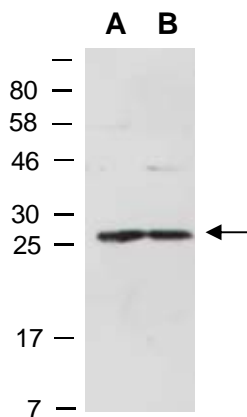


Fig 1. Western blot of total cell extracts from A) human HeLa, B) human Jurkat; using anti-RAB7A (C) (R2460-2) at RT for 2 h.