



Order: (888)-282-5810 (Phone)
(818)-707-0392 (Fax)
order@abiocode.com
Web: www.Abiocode.com

ROS1 (C) Antibody, Rabbit Polyclonal

Cat#: R2486-2

Quantity: 100 ul

Predicted | Observed M.W.: 264 kDa

Lot#: Refer to vial

Application: WB

Uniprot ID: P08922

Background:

Proto-oncogene tyrosine-protein kinase ROS1 belongs to the protein kinase superfamily, the Tyr protein kinase family, and the Insulin receptor subfamily. ROS1 is an orphan receptor tyrosine kinase (RTK) that plays a role in epithelial cell differentiation and regionalization of the proximal epididymal epithelium. ROS1 may activate several downstream signaling pathways related to cell differentiation, proliferation, growth and survival including the PI3 kinase-mTOR signaling pathway. Furthermore, ROS1 mediates the phosphorylation of PTPN11, an activator of this pathway.

Other Names:

Proto-oncogene tyrosine-protein kinase ROS, Proto-oncogene c-Ros, Proto-oncogene c-Ros-1, Receptor tyrosine kinase c-ros oncogene 1, c-Ros receptor tyrosine kinase, MCF3, ROS

Source and Purity:

Rabbit polyclonal antibodies were produced by immunizing animals with a GST-fusion protein containing the C-terminal region of human ROS1. Antibodies were purified by affinity purification using immunogen.

Storage Buffer and Condition:

Supplied in 1 x PBS (pH 7.4), 100 ug/ml BSA, 40% Glycerol, 0.01% NaN₃. Store at -20 °C. Stable for 6 months from date of receipt.

Species Specificity:

Human

Tested Applications:

WB: 1:1,000-1:3,000 (detect endogenous protein*)

*: The apparent protein size on WB may be different from the calculated M.W. due to modifications.

Product Data:

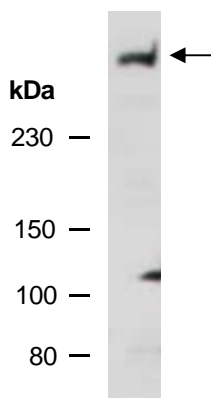


Fig 1. Western blot of total cell extracts from human Jurkat; using anti-ROS1 (C) (R2486-2) at RT for 2 h.