



Order: (888)-282-5810 (Phone)
(818)-707-0392 (Fax)
order@abiocode.com
Web: www.Abiocode.com

SFTPC (N1) Antibody, Rabbit Polyclonal

Cat#: R2495-1

Quantity: 100 ul

Predicted | Observed M.W.: 21 kDa

Lot#: Refer to vial

Application: WB

Uniprot ID: P11686

Background:

Pulmonary surfactant-associated protein C (SFTPC) is a pulmonary surfactant associated proteins promote alveolar stability by lowering the surface tension at the air-liquid interface in the peripheral air spaces.

Other Names:

Pulmonary surfactant-associated protein C, Pulmonary surfactant-associated proteolipid SPL(Val), SP5, SFTP2, SP-C

Source and Purity:

Rabbit polyclonal antibodies were produced by immunizing animals with a GST-fusion protein containing the N-terminal region of human SFTPC. Antibodies were purified by affinity purification using immunogen.

Storage Buffer and Condition:

Supplied in 1 x PBS (pH 7.4), 100 ug/ml BSA, 40% Glycerol, 0.01% NaN₃. Store at -20 °C. Stable for 6 months from date of receipt.

Species Specificity:

Human, Mouse

Tested Applications:

WB: 1:1,000-1:3,000 (detect endogenous protein*)

*: The apparent protein size on WB may be different from the calculated M.W. due to modifications.

Product Data:

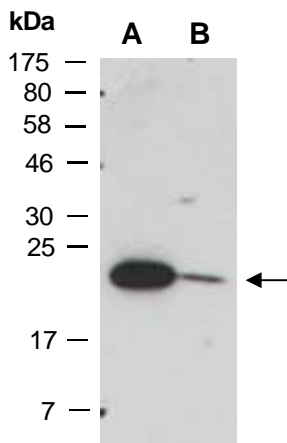


Fig 1. Western blot of total cell extracts from A) mouse brain, B) mouse thymus; using anti-SFTPC (N1) (R2495-1) at RT for 2 h.