



Order: (888)-282-5810 (Phone)
(818)-707-0392 (Fax)
order@abiocode.com
Web: www.Abiocode.com

DSP (vPair™) Antibodies

Cat#: R2906-vp

Lot#: Refer to vial

Predicted I Observed M.W.: 332 kDa

Uniprot ID: P15924

Application: WB

Quantity: 50 ul DSP (N) (R2906-1) Rabbit Polyclonal Antibody &
50 ul DSP (C) (R2906-2) Rabbit Polyclonal Antibody

Product Introduction:

vPair™ antibodies represent a pair of fully characterized antibodies that recognize two different regions of a target protein. The product is developed by Abiocode to address whether the signal observed truly represents the protein of interest, an often encountered issue in antibody-based assays. The use of a pair of fully characterized vPair™ antibodies in the same assay can validate signal specificity since vPair™ antibodies recognize two independent epitopes of the same protein. Different sets of vPair™ antibodies are developed at Abiocode to work with specific applications, including antibody arrays, Western blot, IP-Western, ChIP, IHC, and FACS.

Background:

Desmoplakin (DSP) belongs to the plakin or cytolinker family. DSP is a major high molecular weight protein of desmosomes. DSP is involved in the organization of the desmosomal cadherin-plakoglobin complexes into discrete plasma membrane domains and in the anchoring of intermediate filaments to the desmosomes.

Other Names:

Desmoplakin, DP, 250/210 kDa paraneoplastic pemphigus antigen

Source and Purity:

Rabbit polyclonal antibodies were produced by immunizing animals with GST-fusion proteins containing either the N-terminal [DSP (N) (R2906-1)] or the C-terminal [DSP (C) (R2906-2)] region of human DSP. Antibodies were purified by affinity purification using immunogen.

Storage Buffer and Condition:

Supplied in 1 x PBS (pH 7.4), 100 ug/ml BSA, 40% Glycerol, 0.01% NaN₃. Store at -20 °C. Stable for 6 months from date of receipt.

Species Specificity:

Human

**For research use only. Not for therapeutic or diagnostic purposes.
Abiocode, Inc., 29397 Agoura Rd., Ste 106, Agoura Hills, CA 91301**

Tested Applications:

WB: 1:1,000-1:3,000 (detect endogenous protein*)

*: The apparent protein size on WB may be different from the calculated M.W. due to modifications.

Product Data:

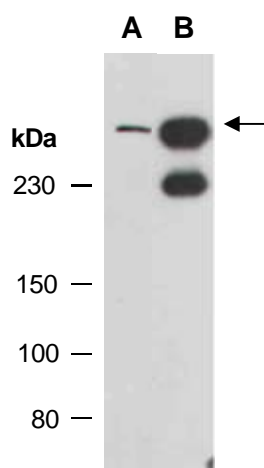


Fig 1. Western blot of total cell extracts from human HeLa, using A) anti-DSP (N) (R2906-1); B) anti-DSP (C) (R2906-2) at RT for 2 h.