



Order: (888)-282-5810 (Phone)  
(818)-707-0392 (Fax)  
[order@abiocode.com](mailto:order@abiocode.com)  
Web: [www.Abiocode.com](http://www.Abiocode.com)

---

## **ROR2 (N) Antibody, Rabbit Polyclonal**

**Cat#: R3000-1**

**Quantity: 100 ul**

**Predicted | Observed M.W.: 105 kDa**

**Lot#: Refer to vial**

**Application: WB**

**Uniprot ID: Q01974**

### **Background:**

Tyrosine-protein kinase transmembrane receptor ROR2 is a single-pass type I membrane protein belonging to the protein kinase superfamily, the Tyr protein kinase family, and the ROR subfamily. ROR2 is a tyrosine-protein kinase receptor which may be involved in the early formation of the chondrocytes. ROR2 seems to be required for cartilage and growth plate development. Additionally, ROR2 phosphorylates YWHAB, leading to induction of osteogenesis and bone formation.

### **Other Names:**

Tyrosine-protein kinase transmembrane receptor ROR2, Neurotrophic tyrosine kinase, receptor-related 2, NTRKR2

### **Source and Purity:**

Rabbit polyclonal antibodies were produced by immunizing animals with a GST-fusion protein containing the N-terminal region of human ROR2. Antibodies were purified by affinity purification using immunogen.

### **Storage Buffer and Condition:**

Supplied in 1 x PBS (pH 7.4), 100 ug/ml BSA, 40% Glycerol, 0.01% NaN<sub>3</sub>. Store at -20 °C. Stable for 6 months from date of receipt.

### **Species Specificity:**

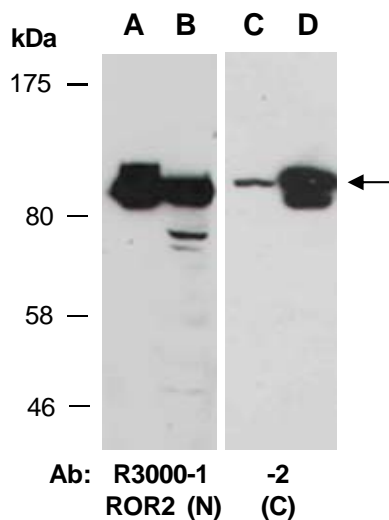
Human

### **Tested Applications:**

WB: 1:1,000-1:3,000 (detect endogenous protein\*)

\*: The apparent protein size on WB may be different from the calculated M.W. due to modifications.

**Product Data:**



**Fig 1.** Western blot of total cell extracts from A, D) human HeLa; B) human Jurkat; C) mouse thymus; using 2 independent Abs against 2 distinct regions of human ROR2 at RT for 2 h.