



Order: (888)-282-5810 (Phone)
(818)-707-0392 (Fax)
order@abiocode.com
Web: www.Abiocode.com

ROR2 (vPair™) Antibodies

Cat#: R3000-vp

Lot#: Refer to vial

Predicted | Observed M.W.: 105 kDa

Uniprot ID: Q01974

Quantity: 50 ul ROR2 (N) (R3000-1) Rabbit Polyclonal Antibody &
50 ul ROR2 (C) (R3000-2) Rabbit Polyclonal Antibody

Product Introduction:

vPair™ antibodies represent a pair of fully characterized antibodies that recognize two different regions of a target protein. The product is developed by Abiocode to address whether the signal observed truly represents the protein of interest, an often encountered issue in antibody-based assays. The use of a pair of fully characterized vPair™ antibodies in the same assay can validate signal specificity since vPair™ antibodies recognize two independent epitopes of the same protein. Different sets of vPair™ antibodies are developed at Abiocode to work with specific applications, including antibody arrays, Western blot, IP-Western, ChIP, IHC, and FACS.

Background:

Tyrosine-protein kinase transmembrane receptor ROR2 is a single-pass type I membrane protein belonging to the protein kinase superfamily, the Tyr protein kinase family, and the ROR subfamily. ROR2 is a tyrosine-protein kinase receptor which may be involved in the early formation of the chondrocytes. ROR2 seems to be required for cartilage and growth plate development. Additionally, ROR2 phosphorylates YWHAB, leading to induction of osteogenesis and bone formation.

Other Names:

Tyrosine-protein kinase transmembrane receptor ROR2, Neurotrophic tyrosine kinase, receptor-related 2, NTRKR2

Source and Purity:

Rabbit polyclonal antibodies were produced by immunizing animals with GST-fusion proteins containing either the N-terminal [ROR2 (N) (R3000-1)] or the C-terminal [ROR2 (C) (R3000-2)] region of human ROR2. Antibodies were purified by affinity purification using immunogen.

Storage Buffer and Condition:

Supplied in 1 x PBS (pH 7.4), 100 ug/ml BSA, 40% Glycerol, 0.01% NaN₃. Store at -20 °C. Stable for 6 months from date of receipt.

For research use only. Not for therapeutic or diagnostic purposes.
Abiocode, Inc., 29397 Agoura Rd., Ste 106, Agoura Hills, CA 91301

Species Specificity:

Human, Mouse

Tested Applications:

WB: 1:1,000-1:3,000 (detect endogenous protein*)

*: The apparent protein size on WB may be different from the calculated M.W. due to modifications.

Product Data:

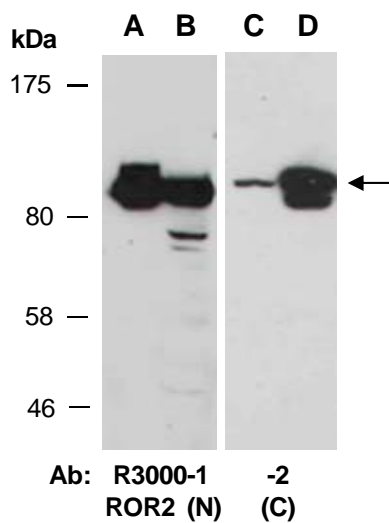


Fig 1. Western blot of total cell extracts from A, D) human HeLa; B) human Jurkat; C) mouse thymus; using 2 independent Abs against 2 distinct regions of human ROR2 at RT for 2 h.