



Order: (888)-282-5810 (Phone)  
(818)-707-0392 (Fax)  
[order@abiocode.com](mailto:order@abiocode.com)  
Web: [www.Abiocode.com](http://www.Abiocode.com)

---

## **PIWIL3 (C) Antibody, Rabbit Polyclonal**

**Cat#: R3009-2**

**Quantity: 100 ul**

**Predicted | Observed M.W.: 101 kDa**

**Lot#: Refer to vial**

**Application: WB**

**Uniprot ID: Q7Z3Z3**

### **Background:**

Piwi-like protein 3 (PIWIL3) belongs to the argonaute family and the Piwi subfamily. PIWIL3 may play a role during spermatogenesis by repressing transposable elements and preventing their mobilization, which is essential for the germline integrity. PIWIL3 acts via the piRNA metabolic process, which mediates the repression of transposable elements during meiosis by forming complexes composed of piRNAs and Piwi proteins and governs the methylation and subsequent repression of transposons.

### **Other Names:**

Piwi-like protein 3

### **Source and Purity:**

Rabbit polyclonal antibodies were produced by immunizing animals with a GST-fusion protein containing the C-terminal region of human PIWIL3. Antibodies were purified by affinity purification using immunogen.

### **Storage Buffer and Condition:**

Supplied in 1 x PBS (pH 7.4), 100 ug/ml BSA, 40% Glycerol, 0.01% NaN<sub>3</sub>. Store at -20 °C. Stable for 6 months from date of receipt.

### **Species Specificity:**

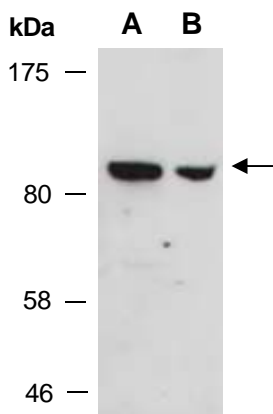
Human

### **Tested Applications:**

WB: 1:1,000-1:3,000 (detect endogenous protein\*)

\*: The apparent protein size on WB may be different from the calculated M.W. due to modifications.

**Product Data:**



**Fig 1.** Western blot of total cell extracts from A) human HeLa, B) human Jurkat; using anti-PIWIL3 (C) (R3009-2) at RT for 2 h.