



Order: (888)-282-5810 (Phone)
(818)-707-0392 (Fax)
order@abiocode.com
Web: www.Abiocode.com

SETD7 (C1) Antibody, Rabbit Polyclonal

Cat#: R0437-2

Quantity: 100 ul

Predicted | Observed M.W.: 41 | 50 kDa

Lot#: Refer to vial

Application: WB

Uniprot ID: Q8WTS6

Background:

Histone-lysine N-methyltransferase SETD7 belongs to the class V-like SAM-binding methyltransferase superfamily, the Histone-lysine methyltransferase family, and the SET7 subfamily. SETD7 is a histone methyltransferase that specifically monomethylates 'Lys-4' of histone H3. H3 'Lys-4' methylation represents a specific tag for epigenetic transcriptional activation. SETD7 plays a central role in the transcriptional activation of genes such as collagenase or insulin.

Other Names:

Histone-lysine N-methyltransferase SETD7, Histone H3-K4 methyltransferase SETD7, H3-K4-HMTase SETD7, Lysine N-methyltransferase 7, SET domain-containing protein 7, SET7/9, KMT7, SET7, SET9

Source and Purity:

Rabbit polyclonal antibodies were produced by immunizing animals with a GST-fusion protein containing the C-terminal region of human SETD7. Antibodies were purified by affinity purification using immunogen.

Storage Buffer and Condition:

Supplied in 1 x PBS (pH 7.4), 100 ug/ml BSA, 40% Glycerol, 0.01% NaN₃. Store at -20 °C. Stable for 6 months from date of receipt.

Species Specificity:

Human

Tested Applications:

WB: 1:1,000-1:3,000 (detect endogenous protein*)

*: The apparent protein size on WB may be different from the calculated M.W. due to modifications.

Product Data:

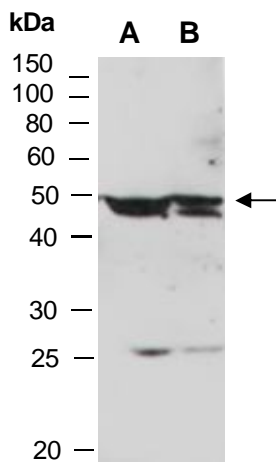


Fig 1. Western blot of total cell extracts from A) human HeLa, B) human Jurkat; using anti-SETD7 (C1) (R0437-2) at RT for 2 h.