



Order: (888)-282-5810 (Phone)
(818)-707-0392 (Fax)
order@abiocode.com
Web: www.Abiocode.com

SGK1 (N) Antibody, Rabbit Polyclonal

Cat#: R0852-1

Quantity: 100 ul

Predicted | Observed M.W.: 49 kDa

Lot#: Refer to vial

Application: WB

Uniprot ID: O00141

Background:

Serine/threonine-protein kinase Sgk1 belongs to the protein kinase superfamily as well as the AGC Ser/Thr protein kinase family. SGK1 is a serine/threonine-protein kinase which is involved in the regulation of a wide variety of ion channels, membrane transporters, cellular enzymes, transcription factors, neuronal excitability, cell growth, proliferation, survival, migration and apoptosis. SGK1 also plays an important role in cellular stress response.

Other Names:

Serine/threonine-protein kinase Sgk1, Serum/glucocorticoid-regulated kinase 1, SGK

Source and Purity:

Rabbit polyclonal antibodies were produced by immunizing animals with a GST-fusion protein containing the N-terminal region of human SGK1. Antibodies were purified by affinity purification using immunogen.

Storage Buffer and Condition:

Supplied in 1 x PBS (pH 7.4), 100 ug/ml BSA, 40% Glycerol, 0.01% NaN₃. Store at -20 °C. Stable for 6 months from date of receipt.

Species Specificity:

Human, Mouse

Tested Applications:

WB: 1:1,000-1:3,000 (detect endogenous protein*)

*: The apparent protein size on WB may be different from the calculated M.W. due to modifications.

Product Data:

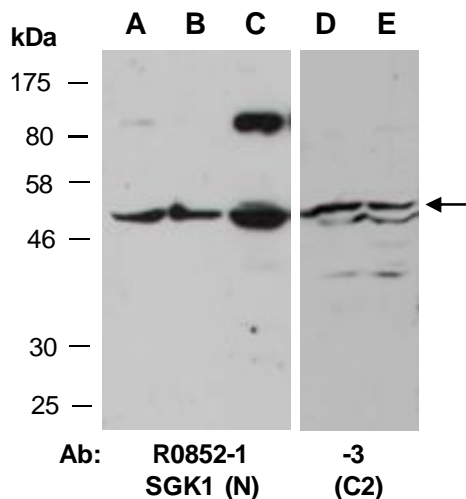


Fig 1. Western blot of total cell extracts from A) mouse brain, B) mouse thymus, C, D) human HeLa, E) human Jurkat; using 2 independent Abs against 2 distinct regions of human SGK1 at RT for 2 h.