



Order: (888)-282-5810 (Phone)  
(818)-707-0392 (Fax)  
[order@abiocode.com](mailto:order@abiocode.com)  
Web: [www.Abiocode.com](http://www.Abiocode.com)

---

## **SGK1 (C2) Antibody, Rabbit Polyclonal**

**Cat#:** R0852-3

**Quantity:** 100 ul

**Predicted | Observed M.W.:** 49 kDa

**Lot#:** Refer to vial

**Application:** WB

**Uniprot ID:** O00141

### **Background:**

Serine/threonine-protein kinase Sgk1 belongs to the protein kinase superfamily as well as the AGC Ser/Thr protein kinase family. SGK1 is a serine/threonine-protein kinase which is involved in the regulation of a wide variety of ion channels, membrane transporters, cellular enzymes, transcription factors, neuronal excitability, cell growth, proliferation, survival, migration and apoptosis. SGK1 also plays an important role in cellular stress response.

### **Other Names:**

Serine/threonine-protein kinase Sgk1, Serum/glucocorticoid-regulated kinase 1, SGK

### **Source and Purity:**

Rabbit polyclonal antibodies were produced by immunizing animals with a GST-fusion protein containing the C-terminal region of human SGK1. Antibodies were purified by affinity purification using immunogen.

### **Storage Buffer and Condition:**

Supplied in 1 x PBS (pH 7.4), 100 ug/ml BSA, 40% Glycerol, 0.01% NaN<sub>3</sub>. Store at -20 °C. Stable for 6 months from date of receipt.

### **Species Specificity:**

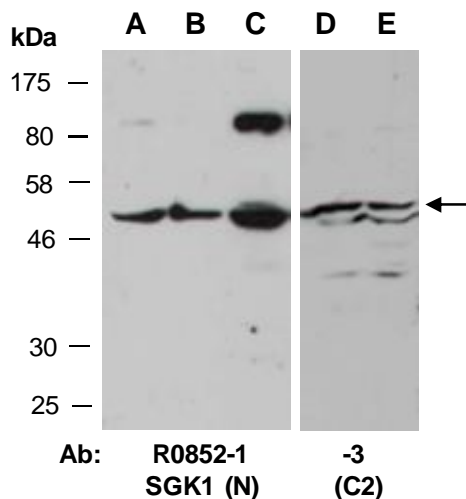
Human

### **Tested Applications:**

WB: 1:1,000-1:3,000 (detect endogenous protein\*)

\*: The apparent protein size on WB may be different from the calculated M.W. due to modifications.

**Product Data:**



**Fig 1.** Western blot of total cell extracts from A) mouse brain, B) mouse thymus, C, D) human HeLa, E) human Jurkat; using 2 independent Abs against 2 distinct regions of human SGK1 at RT for 2 h.