



Order: (888)-282-5810 (Phone)
(818)-707-0392 (Fax)
order@abiocode.com
Web: www.Abiocode.com

SGK1 (vPair™) Antibodies

Cat#: R0852-vp

Lot#: Refer to vial

Predicted | Observed M.W.: 49 kDa

Uniprot ID: O00141

Application: WB

Quantity: 50 ul SGK1 (N) (R0852-1) Rabbit Polyclonal Antibody &
50 ul SGK1 (C2) (R0852-3) Rabbit Polyclonal Antibody

Product Introduction:

vPair™ antibodies represent a pair of fully characterized antibodies that recognize two different regions of a target protein. The product is developed by Abiocode to address whether the signal observed truly represents the protein of interest, an often encountered issue in antibody-based assays. The use of a pair of fully characterized vPair™ antibodies in the same assay can validate signal specificity since vPair™ antibodies recognize two independent epitopes of the same protein. Different sets of vPair™ antibodies are developed at Abiocode to work with specific applications, including antibody arrays, Western blot, IP-Western, CHIP, IHC, and FACS.

Background:

Serine/threonine-protein kinase Sgk1 belongs to the protein kinase superfamily as well as the AGC Ser/Thr protein kinase family. SGK1 is a serine/threonine-protein kinase which is involved in the regulation of a wide variety of ion channels, membrane transporters, cellular enzymes, transcription factors, neuronal excitability, cell growth, proliferation, survival, migration and apoptosis. SGK1 also plays an important role in cellular stress response.

Other Names:

Serine/threonine-protein kinase Sgk1, Serum/glucocorticoid-regulated kinase 1, SGK

Source and Purity:

Rabbit polyclonal antibodies were produced by immunizing animals with GST-fusion proteins containing either the N-terminal [SGK1 (N) (R0852-1)] or the C-terminal [SGK1 (C2) (R0852-3)] region of human SGK1. Antibodies were purified by affinity purification using immunogen.

Storage Buffer and Condition:

Supplied in 1 x PBS (pH 7.4), 100 ug/ml BSA, 40% Glycerol, 0.01% NaN₃. Store at -20 °C. Stable for 6 months from date of receipt.

Species Specificity:

Human, Mouse

Tested Applications:

WB: 1:1,000-1:3,000 (detect endogenous protein*)

*: The apparent protein size on WB may be different from the calculated M.W. due to modifications.

Product Data:

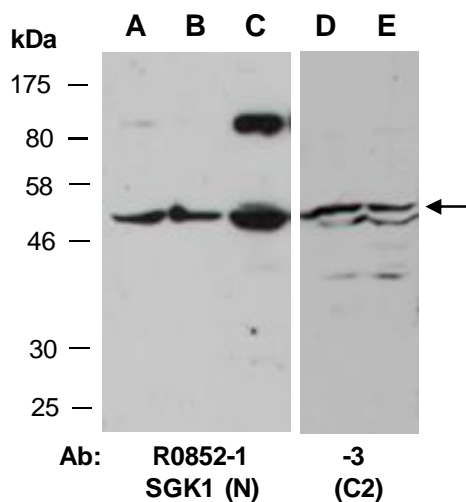


Fig 1. Western blot of total cell extracts from A) mouse brain, B) mouse thymus, C, D) human HeLa, E) human Jurkat; using 2 independent Abs against 2 distinct regions of human SGK1 at RT for 2 h.