



Order: (888)-282-5810 (Phone)  
(818)-707-0392 (Fax)  
[order@abiocode.com](mailto:order@abiocode.com)  
Web: [www.Abiocode.com](http://www.Abiocode.com)

---

## **MED6 (C) Antibody, Rabbit Polyclonal**

**Cat#:** R1755-2

**Quantity:** 100 ul

**Predicted | Observed M.W.:** 28 kDa

**Lot#:** Refer to vial

**Application:** WB

**Uniprot ID:** O75586

### **Background:**

Mediator of RNA polymerase II transcription subunit 6 (MED6) belongs to the Mediator complex subunit 6 family. MED6 is a component of the Mediator complex, a coactivator involved in the regulated transcription of nearly all RNA polymerase II-dependent genes. MED6 functions as a bridge to convey information from gene-specific regulatory proteins to the basal RNA polymerase II transcription machinery.

### **Other Names:**

Mediator of RNA polymerase II transcription subunit 6, Activator-recruited cofactor 33 kDa component, ARC33, Mediator complex subunit 6, hMed6, Renal carcinoma antigen NY-REN-28, ARC33

### **Source and Purity:**

Rabbit polyclonal antibodies were produced by immunizing animals with a GST-fusion protein containing the C-terminal region of human MED6. Antibodies were purified by affinity purification using immunogen.

### **Storage Buffer and Condition:**

Supplied in 1 x PBS (pH 7.4), 100 ug/ml BSA, 40% Glycerol, 0.01% NaN<sub>3</sub>. Store at -20 °C. Stable for 6 months from date of receipt.

### **Species Specificity:**

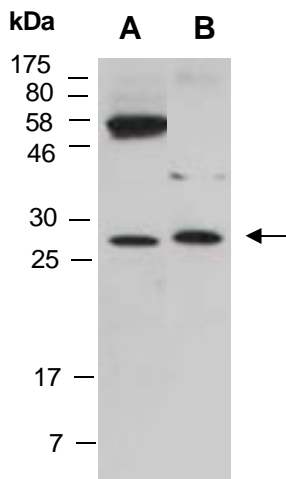
Human, Mouse

### **Tested Applications:**

WB: 1:1,000-1:3,000 (detect endogenous protein\*)

\*: The apparent protein size on WB may be different from the calculated M.W. due to modifications.

**Product Data:**



**Fig 1.** Western blot of total cell extracts from A) mouse brain, B) human HeLa; using anti-MED6 (C) (R1755-2) at RT for 2 h.