



Order: (888)-282-5810 (Phone)
(818)-707-0392 (Fax)
order@abiocode.com
Web: www.Abiocode.com

EML4 (C) Antibody, Rabbit Polyclonal

Cat#: R2537-2

Quantity: 100 ul

Predicted | Observed M.W.: 109 kDa

Lot#: Refer to vial

Application: WB

Uniprot ID: Q9HC35

Background:

Echinoderm microtubule-associated protein-like 4 (EML4) belongs to the WD repeat EMAP family. EML4 may modify the assembly dynamics of microtubules, such that microtubules are slightly longer, but more dynamic.

Other Names:

Echinoderm microtubule-associated protein-like 4, Restrictedly overexpressed proliferation-associated protein, Ropp 120, C2orf2, EMAPL4, EMAP-4

Source and Purity:

Rabbit polyclonal antibodies were produced by immunizing animals with a GST-fusion protein containing the C-terminal region of human EML4. Antibodies were purified by affinity purification using immunogen.

Storage Buffer and Condition:

Supplied in 1 x PBS (pH 7.4), 100 ug/ml BSA, 40% Glycerol, 0.01% NaN₃. Store at -20 °C. Stable for 6 months from date of receipt.

Species Specificity:

Human

Tested Applications:

WB: 1:1,000-1:3,000 (detect endogenous protein*)

*: The apparent protein size on WB may be different from the calculated M.W. due to modifications.

Product Data:

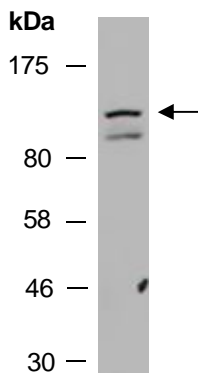


Fig 1. Western blot of total cell extracts from human HeLa; using anti-EML4 (C) (R2537-2) at RT for 2 h.