



Order: (888)-282-5810 (Phone)
(818)-707-0392 (Fax)
order@abiocode.com
Web: www.Abiocode.com

PIM1 (N) Antibody, Rabbit Polyclonal

Cat#: R2818-1

Quantity: 100 ul

Predicted | Observed M.W.: 45 kDa

Lot#: Refer to vial

Application: WB

Uniprot ID: P11309

Background:

Serine/threonine-protein kinase pim-1 (PIM1) belongs to the protein kinase superfamily, the CAMK Ser/Thr protein kinase family, and the PIM subfamily. PIM1 is a proto-oncogene with serine/threonine kinase activity involved in cell survival and cell proliferation, thus providing a selective advantage in tumorigenesis. PIM1 exerts its oncogenic activity through: the regulation of MYC transcriptional activity, the regulation of cell cycle progression and by phosphorylation and inhibition of proapoptotic proteins.

Other Names:

Serine/threonine-protein kinase pim-1

Source and Purity:

Rabbit polyclonal antibodies were produced by immunizing animals with a GST-fusion protein containing the N-terminal region of human PIM1. Antibodies were purified by affinity purification using immunogen.

Storage Buffer and Condition:

Supplied in 1 x PBS (pH 7.4), 100 ug/ml BSA, 40% Glycerol, 0.01% NaN₃. Store at -20 °C. Stable for 6 months from date of receipt.

Species Specificity:

Human, Mouse

Tested Applications:

WB: 1:1,000-1:3,000 (detect endogenous protein*)

*: The apparent protein size on WB may be different from the calculated M.W. due to modifications.

Product Data:

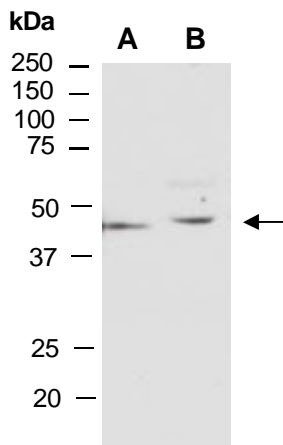


Fig 1. Western blot of total cell extracts from A) mouse thymus, B) human HeLa; using anti-PIM (N) (R2818-1) at RT for 2 h.