



Order: (888)-282-5810 (Phone)  
(818)-707-0392 (Fax)  
[order@abiocode.com](mailto:order@abiocode.com)  
Web: [www.Abiocode.com](http://www.Abiocode.com)

---

## **SF3B1 (N) Antibody, Rabbit Polyclonal**

**Cat#: R2842-1**

**Quantity: 100 ul**

**Predicted | Observed M.W.: 146 kDa**

**Lot#: Refer to vial**

**Application: WB**

**Uniprot ID: O75533**

### **Background:**

Splicing factor 3B subunit 1 (SF3B1) belongs to the SF3B1 family. SF3B1 is a subunit of the splicing factor SF3B required for 'A' complex assembly formed by the stable binding of U2 snRNP to the branchpoint sequence (BPS) in pre-mRNA. SF3B1 sequence independent binding of SF3A/SF3B complex upstream of the branch site is essential; it may anchor U2 snRNP to the pre-mRNA. SF3B1 may also be involved in the assembly of the 'E' complex.

### **Other Names:**

Splicing factor 3B subunit 1, Pre-mRNA-splicing factor SF3b 155 kDa subunit, SF3b155, Spliceosome-associated protein 155, SAP 155, SAP155

### **Source and Purity:**

Rabbit polyclonal antibodies were produced by immunizing animals with a GST-fusion protein containing the N-terminal region of human SF3B1. Antibodies were purified by affinity purification using immunogen.

### **Storage Buffer and Condition:**

Supplied in 1 x PBS (pH 7.4), 100 ug/ml BSA, 40% Glycerol, 0.01% NaN<sub>3</sub>. Store at -20 °C. Stable for 6 months from date of receipt.

### **Species Specificity:**

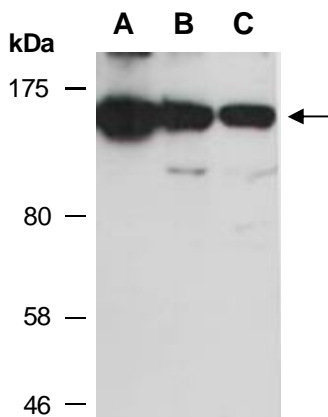
Human, Mouse

### **Tested Applications:**

WB: 1:1,000-1:3,000 (detect endogenous protein\*)

\*: The apparent protein size on WB may be different from the calculated M.W. due to modifications.

**Product Data:**



**Fig 1.** Western blot of total cell extracts from A) mouse thymus, B) human HeLa, C) human Jurkat; using anti-SF3B1 (N) (R2842-1) at RT for 2 h.