



Order: (888)-282-5810 (Phone)
(818)-707-0392 (Fax)
order@abiocode.com
Web: www.Abiocode.com

TAF15 (N1) Antibody, Rabbit Polyclonal

Cat#: R2846-1

Quantity: 100 ul

Predicted | Observed M.W.: 62 kDa

Lot#: Refer to vial

Application: WB

Uniprot ID: Q92804

Background:

TATA-binding protein-associated factor 2N (TAF15) belongs to the RRM TET family. TAF15 is an RNA and ssDNA-binding protein that may play specific roles during transcription initiation at distinct promoters. TAF15 can enter the preinitiation complex together with the RNA polymerase II (Pol II).

Other Names:

TATA-binding protein-associated factor 2N, 68 kDa TATA-binding protein-associated factor, TAF(II)68, TAFII68, RNA-binding protein 56, RBP56, TAF2N

Source and Purity:

Rabbit polyclonal antibodies were produced by immunizing animals with a GST-fusion protein containing the N-terminal region of human TAF15. Antibodies were purified by affinity purification using immunogen.

Storage Buffer and Condition:

Supplied in 1 x PBS (pH 7.4), 100 ug/ml BSA, 40% Glycerol, 0.01% NaN₃. Store at -20 °C. Stable for 6 months from date of receipt.

Species Specificity:

Human, Mouse

Tested Applications:

WB: 1:1,000-1:3,000 (detect endogenous protein*)

*: The apparent protein size on WB may be different from the calculated M.W. due to modifications.

Product Data:

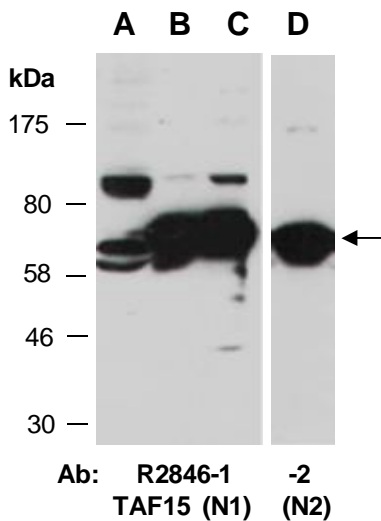


Fig 1. Western blot of total cell extracts from A) mouse thymus, B, D) human HeLa, C) human Jurkat; using 2 independent Abs against 2 distinct regions of human TAF15 at RT for 2 h.