



Order: (888)-282-5810 (Phone)  
(818)-707-0392 (Fax)  
[order@abiocode.com](mailto:order@abiocode.com)  
Web: [www.Abiocode.com](http://www.Abiocode.com)

---

## **TAF15 (N2) Antibody, Rabbit Polyclonal**

**Cat#: R2846-2**

**Quantity: 100 ul**

**Predicted | Observed M.W.: 62 kDa**

**Lot#: Refer to vial**

**Application: WB**

**Uniprot ID: Q92804**

### **Background:**

TATA-binding protein-associated factor 2N (TAF15) belongs to the RRM TET family. TAF15 is an RNA and ssDNA-binding protein that may play specific roles during transcription initiation at distinct promoters. TAF15 can enter the preinitiation complex together with the RNA polymerase II (Pol II).

### **Other Names:**

TATA-binding protein-associated factor 2N, 68 kDa TATA-binding protein-associated factor, TAF(II)68, TAFII68, RNA-binding protein 56, RBP56, TAF2N

### **Source and Purity:**

Rabbit polyclonal antibodies were produced by immunizing animals with a GST-fusion protein containing the N-terminal region of human TAF15. Antibodies were purified by affinity purification using immunogen.

### **Storage Buffer and Condition:**

Supplied in 1 x PBS (pH 7.4), 100 ug/ml BSA, 40% Glycerol, 0.01% NaN<sub>3</sub>. Store at -20 °C. Stable for 6 months from date of receipt.

### **Species Specificity:**

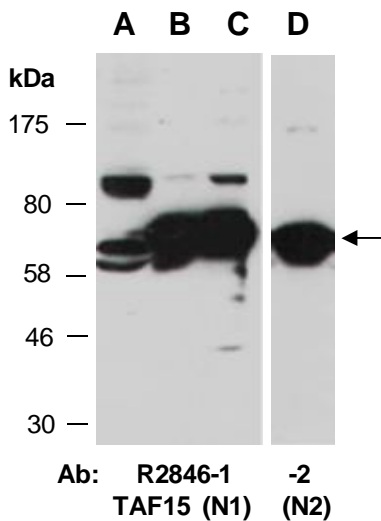
Human

### **Tested Applications:**

WB: 1:1,000-1:3,000 (detect endogenous protein\*)

\*: The apparent protein size on WB may be different from the calculated M.W. due to modifications.

**Product Data:**



**Fig 1.** Western blot of total cell extracts from A) mouse thymus, B, D) human HeLa, C) human Jurkat; using 2 independent Abs against 2 distinct regions of human TAF15 at RT for 2 h.