



Order: (888)-282-5810 (Phone)
(818)-707-0392 (Fax)
order@abiocode.com
Web: www.Abiocode.com

XPO1 (N) Antibody, Rabbit Polyclonal

Cat#: R2853-1

Quantity: 100 ul

Predicted | Observed M.W.: 123 kDa

Lot#: Refer to vial

Application: WB

Uniprot ID: O14980

Background:

Exportin-1 (XPO1) belongs to the exportin family and mediates the nuclear export of cellular proteins (cargos) bearing a leucine-rich nuclear export signal (NES) and of RNAs. In the nucleus, in association with RANBP3, XPO1 binds cooperatively to the NES on its target protein and to the GTPase RAN in its active GTP-bound form (Ran-GTP).

Other Names:

Exportin-1, Chromosome region maintenance 1 protein homolog, CRM1, EXP1

Source and Purity:

Rabbit polyclonal antibodies were produced by immunizing animals with a GST-fusion protein containing the N-terminal region of human XPO1. Antibodies were purified by affinity purification using immunogen.

Storage Buffer and Condition:

Supplied in 1 x PBS (pH 7.4), 100 ug/ml BSA, 40% Glycerol, 0.01% NaN₃. Store at -20 °C. Stable for 6 months from date of receipt.

Species Specificity:

Human, Mouse

Tested Applications:

WB: 1:1,000-1:3,000 (detect endogenous protein*)

*: The apparent protein size on WB may be different from the calculated M.W. due to modifications.

Product Data:

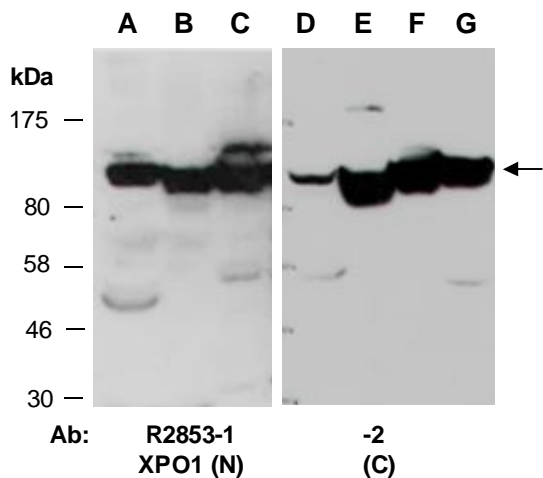


Fig 1. Western blot of total cell extracts from A, D) mouse brain, B, E) mouse thymus, C, F) human HeLa, G) human Jurkat; using 2 independent Abs against 2 distinct regions of human XPO1 at RT for 2 h.