



Order: (888)-282-5810 (Phone)
(818)-707-0392 (Fax)
order@abiocode.com
Web: www.Abiocode.com

SFN (N) Antibody, Rabbit Polyclonal

Cat#: R2858-1

Quantity: 100 ul

Predicted | Observed M.W.: 28 kDa

Lot#: Refer to vial

Application: WB

Uniprot ID: P31947

Background:

14-3-3 protein sigma (SFN) belongs to the 14-3-3 family and is an adapter protein implicated in the regulation of a large spectrum of both general and specialized signaling pathways. SFN binds to a large number of partners, usually by recognition of a phosphoserine or phosphothreonine motif. Binding generally results in the modulation of the activity of the binding partner.

Other Names:

14-3-3 protein sigma, Epithelial cell marker protein 1, Stratifin, HME1

Source and Purity:

Rabbit polyclonal antibodies were produced by immunizing animals with a GST-fusion protein containing the N-terminal region of human SFN. Antibodies were purified by affinity purification using immunogen.

Storage Buffer and Condition:

Supplied in 1 x PBS (pH 7.4), 100 ug/ml BSA, 40% Glycerol, 0.01% NaN₃. Store at -20 °C. Stable for 6 months from date of receipt.

Species Specificity:

Human, Mouse

Tested Applications:

WB: 1:1,000-1:3,000 (detect endogenous protein*)

*: The apparent protein size on WB may be different from the calculated M.W. due to modifications.

Product Data:

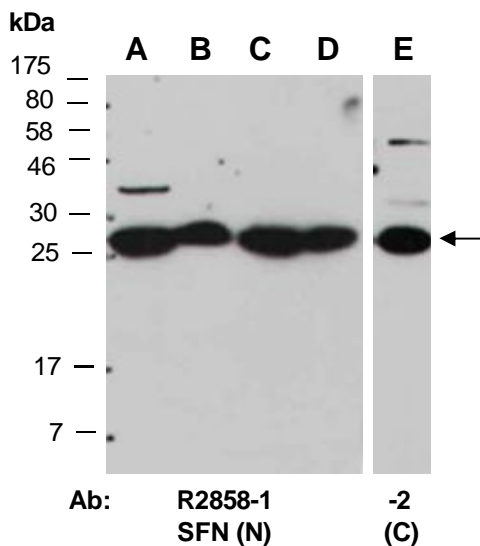


Fig 1. Western blot of total cell extracts from A) mouse brain, B) mouse thymus, C, E) human HeLa, D) human Jurkat; using 2 independent Abs against 2 distinct regions of human SFNat RT for 2 h.