



Order: (888)-282-5810 (Phone)  
(818)-707-0392 (Fax)  
[order@abiocode.com](mailto:order@abiocode.com)  
Web: [www.Abiocode.com](http://www.Abiocode.com)

---

## SFN (C) Antibody, Rabbit Polyclonal

**Cat#:** R2858-2

**Quantity:** 100 ul

**Predicted | Observed M.W.:** 28 kDa

**Lot#:** Refer to vial

**Application:** WB

**Uniprot ID:** P31947

### **Background:**

14-3-3 protein sigma (SFN) belongs to the 14-3-3 family and is an adapter protein implicated in the regulation of a large spectrum of both general and specialized signaling pathways. SFN binds to a large number of partners, usually by recognition of a phosphoserine or phosphothreonine motif. Binding generally results in the modulation of the activity of the binding partner.

### **Other Names:**

14-3-3 protein sigma, Epithelial cell marker protein 1, Stratifin, HME1

### **Source and Purity:**

Rabbit polyclonal antibodies were produced by immunizing animals with a GST-fusion protein containing the C-terminal region of human SFN. Antibodies were purified by affinity purification using immunogen.

### **Storage Buffer and Condition:**

Supplied in 1 x PBS (pH 7.4), 100 ug/ml BSA, 40% Glycerol, 0.01% NaN<sub>3</sub>. Store at -20 °C. Stable for 6 months from date of receipt.

### **Species Specificity:**

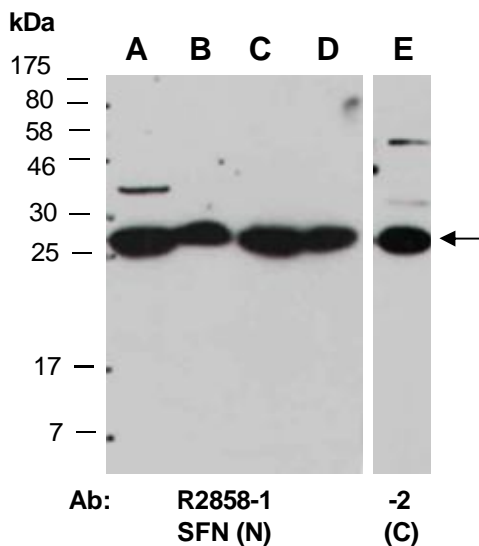
Human

### **Tested Applications:**

WB: 1:1,000-1:3,000 (detect endogenous protein\*)

\*: The apparent protein size on WB may be different from the calculated M.W. due to modifications.

**Product Data:**



**Fig 1.** Western blot of total cell extracts from A) mouse brain, B) mouse thymus, C, E) human HeLa, D) human Jurkat; using 2 independent Abs against 2 distinct regions of human SFN<sub>RT</sub> for 2 h.