



Order: (888)-282-5810 (Phone)  
(818)-707-0392 (Fax)  
[order@abiocode.com](mailto:order@abiocode.com)  
Web: [www.Abiocode.com](http://www.Abiocode.com)

---

## SFN (vPair™) Antibodies

**Cat#: R2858-vp**

**Lot#: Refer to vial**

**Predicted | Observed M.W.: 28 kDa**

**Uniprot ID: P31947**

**Application: WB**

**Quantity:** 50 ul SFN (N) (R2858-1) Rabbit Polyclonal Antibody &  
50 ul SFN (C) (R2858-2) Rabbit Polyclonal Antibody

### **Product Introduction:**

vPair™ antibodies represent a pair of fully characterized antibodies that recognize two different regions of a target protein. The product is developed by Abiocode to address whether the signal observed truly represents the protein of interest, an often encountered issue in antibody-based assays. The use of a pair of fully characterized vPair™ antibodies in the same assay can validate signal specificity since vPair™ antibodies recognize two independent epitopes of the same protein. Different sets of vPair™ antibodies are developed at Abiocode to work with specific applications, including antibody arrays, Western blot, IP-Western, CHIP, IHC, and FACS.

### **Background:**

14-3-3 protein sigma (SFN) belongs to the 14-3-3 family and is an adapter protein implicated in the regulation of a large spectrum of both general and specialized signaling pathways. SFN binds to a large number of partners, usually by recognition of a phosphoserine or phosphothreonine motif. Binding generally results in the modulation of the activity of the binding partner.

### **Other Names:**

14-3-3 protein sigma, Epithelial cell marker protein 1, Stratifin, HME1

### **Source and Purity:**

Rabbit polyclonal antibodies were produced by immunizing animals with GST-fusion proteins containing either the N-terminal [SFN (N) (R2858-1)] or the C-terminal [SFN (C) (R2858-2)] region of human SFN. Antibodies were purified by affinity purification using immunogen.

### **Storage Buffer and Condition:**

Supplied in 1 x PBS (pH 7.4), 100 ug/ml BSA, 40% Glycerol, 0.01% NaN<sub>3</sub>. Store at -20 °C. Stable for 6 months from date of receipt.

**Species Specificity:**

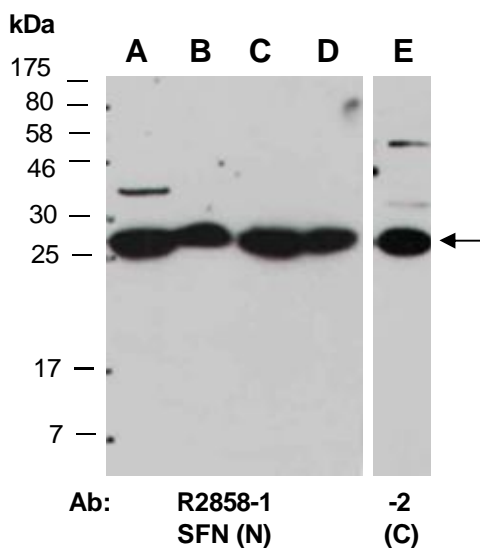
Human, Mouse

**Tested Applications:**

WB: 1:1,000-1:3,000 (detect endogenous protein\*)

\*: The apparent protein size on WB may be different from the calculated M.W. due to modifications.

**Product Data:**



**Fig 1.** Western blot of total cell extracts from A) mouse brain, B) mouse thymus, C, E) human HeLa, D) human Jurkat; using 2 independent Abs against 2 distinct regions of human SFNat RT for 2 h.