



Order: (888)-282-5810 (Phone)  
(818)-707-0392 (Fax)  
[order@abiocode.com](mailto:order@abiocode.com)  
Web: [www.Abiocode.com](http://www.Abiocode.com)

---

## **MLF1 (C) Antibody, Rabbit Polyclonal**

**Cat#:** R2917-2

**Quantity:** 100 ul

**Predicted | Observed M.W.:** 31 | 42 kDa

**Lot#:** Refer to vial

**Application:** WB

**Uniprot ID:** P58340

### **Background:**

Myeloid leukemia factor 1 (MLF1) belongs to the MLF family and is involved in lineage commitment of primary hemopoietic progenitors by restricting erythroid formation and enhancing myeloid formation. MLF1 interferes with erythropoietin-induced erythroid terminal differentiation by preventing cells from exiting the cell cycle through suppression of CDKN1B/p27Kip1 levels. MLF1 also binds DNA and affects the expression of a number of genes so may function as a transcription factor in the nucleus.

### **Other Names:**

Myeloid leukemia factor 1, Myelodysplasia-myeloid leukemia factor 1

### **Source and Purity:**

Rabbit polyclonal antibodies were produced by immunizing animals with a GST-fusion protein containing the C-terminal region of human MLF1. Antibodies were purified by affinity purification using immunogen.

### **Storage Buffer and Condition:**

Supplied in 1 x PBS (pH 7.4), 100 ug/ml BSA, 40% Glycerol, 0.01% NaN<sub>3</sub>. Store at -20 °C. Stable for 6 months from date of receipt.

### **Species Specificity:**

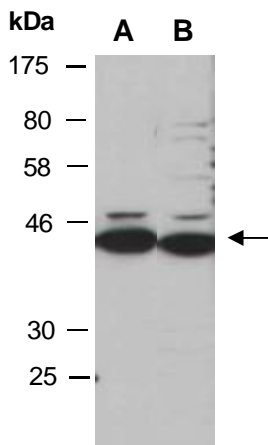
Human, Mouse

### **Tested Applications:**

WB: 1:1,000-1:3,000 (detect endogenous protein\*)

\*: The apparent protein size on WB may be different from the calculated M.W. due to modifications.

**Product Data:**



**Fig 1.** Western blot of total cell extracts from A) mouse thymus, B) human Jurkat; using anti-MLF1 (C) (R2917-2) at RT for 2 h.