



Order: (888)-282-5810 (Phone)  
(818)-707-0392 (Fax)  
[order@abiocode.com](mailto:order@abiocode.com)  
Web: [www.Abiocode.com](http://www.Abiocode.com)

---

## STRADB (vPair™) Antibodies

**Cat#: R3049-vp**

**Lot#: Refer to vial**

**Predicted | Observed M.W.: 47 | 54 kDa**

**Uniprot ID: Q9C0K7**

**Application: WB**

**Quantity:** 50 ul STRADB (N) (R3049-1) Rabbit Polyclonal Antibody &  
50 ul STRADB (C) (R3049-2) Rabbit Polyclonal Antibody

### **Product Introduction:**

vPair™ antibodies represent a pair of fully characterized antibodies that recognize two different regions of a target protein. The product is developed by Abiocode to address whether the signal observed truly represents the protein of interest, an often encountered issue in antibody-based assays. The use of a pair of fully characterized vPair™ antibodies in the same assay can validate signal specificity since vPair™ antibodies recognize two independent epitopes of the same protein. Different sets of vPair™ antibodies are developed at Abiocode to work with specific applications, including antibody arrays, Western blot, IP-Western, CHIP, IHC, and FACS.

### **Background:**

STE20-related kinase adapter protein beta (STRADB) belongs to the protein kinase superfamily, the STE Ser/Thr protein kinase family, and the STE20 subfamily. STRADB is a pseudokinase which, in complex with CAB39/MO25 (CAB39/MO25alpha or CAB39L/MO25beta), binds to and activates STK11/LKB1. STRADB adopts a closed conformation typical of active protein kinases and binds STK11/LKB1 as a pseudosubstrate, promoting conformational change of STK11/LKB1 in an active conformation.

### **Other Names:**

STE20-related kinase adapter protein beta, Amyotrophic lateral sclerosis 2 chromosomal region candidate gene 2 protein, CALS-21, ILP-interacting protein, Pseudokinase ALS2CR2, STRAD beta, ALS2CR2, ILPIP

### **Source and Purity:**

Rabbit polyclonal antibodies were produced by immunizing animals with GST-fusion proteins containing either the N-terminal [STRADB (N) (R3049-1)] or the C-terminal [STRADB (C) (R3049-2)] region of human STRADB. Antibodies were purified by affinity purification using immunogen.

**Storage Buffer and Condition:**

Supplied in 1 x PBS (pH 7.4), 100 ug/ml BSA, 40% Glycerol, 0.01% NaN<sub>3</sub>. Store at -20 °C. Stable for 6 months from date of receipt.

**Species Specificity:**

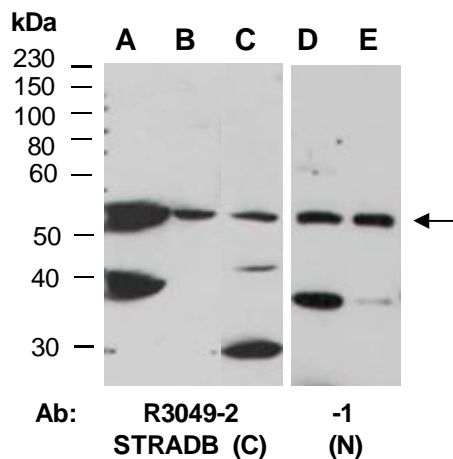
Human, Mouse

**Tested Applications:**

WB: 1:1,000-1:3,000 (detect endogenous protein\*)

\*: The apparent protein size on WB may be different from the calculated M.W. due to modifications.

**Product Data:**



**Fig 1.** Western blot of total cell extracts from A, D) mouse brain, B, E) mouse thymus, C) human Jurkat; using 2 independent Abs against 2 distinct regions of human STRADB at RT for 2 h.