



Order: (888)-282-5810 (Phone)
(818)-707-0392 (Fax)
order@abiocode.com
Web: www.Abiocode.com

PPP3CA (N) Antibody, Rabbit Polyclonal

Cat#: R1738-1

Quantity: 100 ul

Predicted | Observed M.W.: 59 kDa

Lot#: Refer to vial

Application: WB

Uniprot ID: Q08209

Background:

Serine/threonine-protein phosphatase 2B catalytic subunit alpha isoform (PPP3CA) belongs to the PPP phosphatase family and the PP-2B subfamily. PPP3CA is a calcium-dependent, calmodulin-stimulated protein phosphatase. Many of the substrates contain a PxlIT motif. This subunit may have a role in the calmodulin activation of calcineurin. PPP3CA also dephosphorylates DNM1L, HSPB1 and SSH1.

Other Names:

Serine/threonine-protein phosphatase 2B catalytic subunit alpha isoform, CAM-PRP catalytic subunit, Calmodulin-dependent calcineurin A subunit alpha isoform, CALNA, CNA

Source and Purity:

Rabbit polyclonal antibodies were produced by immunizing animals with a GST-fusion protein containing the N-terminal region of human PPP3CA. Antibodies were purified by affinity purification using immunogen.

Storage Buffer and Condition:

Supplied in 1 x PBS (pH 7.4), 100 ug/ml BSA, 40% Glycerol, 0.01% NaN₃. Store at -20 °C. Stable for 6 months from date of receipt.

Species Specificity:

Human, Mouse

Tested Applications:

WB: 1:1,000-1:3,000 (detect endogenous protein*)

*: The apparent protein size on WB may be different from the calculated M.W. due to modifications.

Product Data:

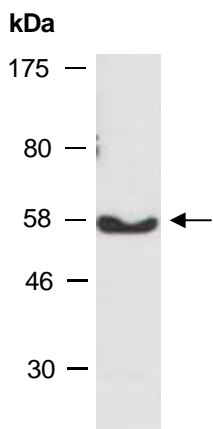


Fig 1. Western blot of total cell extracts from mouse brain; using anti-PPP3CA (N) (R1738-1) at RT for 2 h.