



Order: (888)-282-5810 (Phone)
(818)-707-0392 (Fax)
order@abiocode.com
Web: www.Abiocode.com

LGR5 (M) Antibody, Rabbit Polyclonal

Cat#: R2036-3

Quantity: 100 ul

Predicted | Observed M.W.: 100 kDa

Lot#: Refer to vial

Application: WB

Uniprot ID: O75473

Background:

Leucine-rich repeat-containing G-protein coupled receptor 5 (LGR5) is a multi-pass membrane protein belonging to the G-protein coupled receptor 1 family. LGR5 is a receptor for R-spondins that potentiates the canonical Wnt signaling pathway and acts as a stem cell marker of the intestinal epithelium and the hair follicle. LGR5 is also involved in the development and/or maintenance of the adult intestinal stem cells during postembryonic development.

Other Names:

Leucine-rich repeat-containing G-protein coupled receptor 5, G-protein coupled receptor 49, G-protein coupled receptor 67, G-protein coupled receptor HG38, GPR49, GPR67

Source and Purity:

Rabbit polyclonal antibodies were produced by immunizing animals with a GST-fusion protein containing the middle region of human LGR5. Antibodies were purified by affinity purification using immunogen.

Storage Buffer and Condition:

Supplied in 1 x PBS (pH 7.4), 100 ug/ml BSA, 40% Glycerol, 0.01% NaN₃. Store at -20 °C. Stable for 6 months from date of receipt.

Species Specificity:

Human

Tested Applications:

WB: 1:1,000-1:3,000 (detect endogenous protein*)

*: The apparent protein size on WB may be different from the calculated M.W. due to modifications.

Product Data:

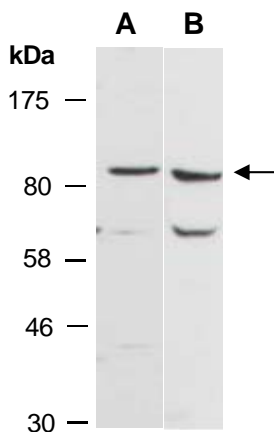


Fig 1. Western blot of total cell extracts from A) human HeLa, B) human HepG2; using anti-LGR5 (M) (R2036-3) at RT for 2 h.