



Order: (888)-282-5810 (Phone)
(818)-707-0392 (Fax)
order@abiocode.com
Web: www.Abiocode.com

MLANA (C) Antibody, Rabbit Polyclonal

Cat#: R2493-2

Quantity: 100 ul

Predicted | Observed M.W.: 13 | 20 kDa

Lot#: Refer to vial

Application: WB

Uniprot ID: Q16655

Background:

Melanoma antigen recognized by T-cells 1 (MLANA) is a single-pass type III membrane protein involved in melanosome biogenesis by ensuring the stability of GPR143. MLANA plays a vital role in the expression, stability, trafficking, and processing of melanocyte protein PMEL, which is critical to the formation of stage II melanosomes.

Other Names:

Melanoma antigen recognized by T-cells 1, MART1, Antigen LB39-AA, Antigen SK29-AA, Protein Melan-A

Source and Purity:

Rabbit polyclonal antibodies were produced by immunizing animals with a GST-fusion protein containing the C-terminal region of human MLANA. Antibodies were purified by affinity purification using immunogen.

Storage Buffer and Condition:

Supplied in 1 x PBS (pH 7.4), 100 ug/ml BSA, 40% Glycerol, 0.01% NaN₃. Store at -20 °C. Stable for 6 months from date of receipt.

Species Specificity:

Human, Mouse

Tested Applications:

WB: 1:1,000-1:3,000 (detect endogenous protein*)

*: The apparent protein size on WB may be different from the calculated M.W. due to modifications.

Product Data:

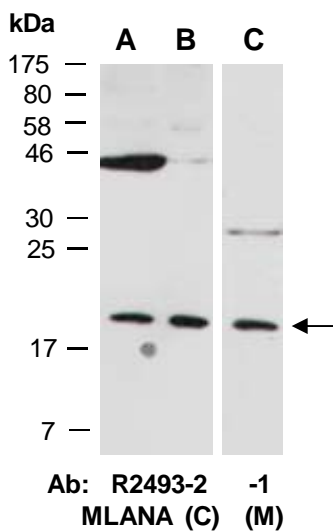


Fig 1. Western blot of total cell extracts from A, C) mouse thymus, B) human HeLa; using 2 independent Abs against 2 distinct regions of human MLANA at RT for 2 h.