



Order: (888)-282-5810 (Phone)
(818)-707-0392 (Fax)
order@abiocode.com
Web: www.Abiocode.com

ABI1 (N) Antibody, Rabbit Polyclonal

Cat#: R2845-1

Quantity: 100 ul

Predicted | Observed M.W.: 55 kDa

Lot#: Refer to vial

Application: WB

Uniprot ID: Q9IZP0

Background:

Abl interactor 1 (ABI1) belongs to the ABI family. ABI1 may act in negative regulation of cell growth and transformation by interacting with nonreceptor tyrosine kinases ABL1 and/or ABL2. Additionally, ABI1 may play a role in regulation of EGF-induced Erk pathway activation. ABI1 is also involved in cytoskeletal reorganization and EGFR signaling.

Other Names:

Abl interactor 1, SSH3BP1, Abelson interactor 1, Abi-1, Abl-binding protein 4, AbIBP4, Eps8 SH3 domain-binding protein, Eps8-binding protein, Nap1-binding protein, Nap1BP, Spectrin SH3 domain-binding protein 1, e3B1

Source and Purity:

Rabbit polyclonal antibodies were produced by immunizing animals with a GST-fusion protein containing the N-terminal region of human ABI1. Antibodies were purified by affinity purification using immunogen.

Storage Buffer and Condition:

Supplied in 1 x PBS (pH 7.4), 100 ug/ml BSA, 40% Glycerol, 0.01% NaN₃. Store at -20 °C. Stable for 6 months from date of receipt.

Species Specificity:

Human, Mouse

Tested Applications:

WB: 1:1,000-1:3,000 (detect endogenous protein*)

*: The apparent protein size on WB may be different from the calculated M.W. due to modifications.

Product Data:

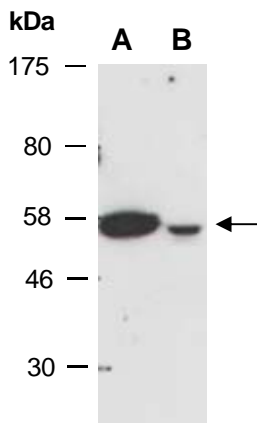


Fig 1. Western blot of total cell extracts from A) mouse brain, B) mouse thymus; using anti-ABI1 (N) (R2845-1) at RT for 2 h.