



Order: (888)-282-5810 (Phone)  
(818)-707-0392 (Fax)  
[order@abiocode.com](mailto:order@abiocode.com)  
Web: [www.Abiocode.com](http://www.Abiocode.com)

---

## ZRSR2 (C1) Antibody, Rabbit Polyclonal

**Cat#: R2855-1**

**Quantity: 100 ul**

**Predicted | Observed M.W.: 58 kDa**

**Lot#: Refer to vial**

**Application: WB**

**Uniprot ID: Q15696**

### Background:

U2 small nuclear ribonucleoprotein auxiliary factor 35 kDa subunit-related protein 2 (ZRSR2) is a pre-mRNA-binding protein required for splicing of both U2- and U12-type introns. ZRSR2 selectively interacts with the 3'-splice site of U2- and U12-type pre-mRNAs and promotes different steps in U2 and U12 intron splicing. ZRSR2 is recruited to U12 pre-mRNAs in an ATP-dependent manner and is required for assembly of the prespliceosome, a precursor to other spliceosomal complexes.

### Other Names:

U2 small nuclear ribonucleoprotein auxiliary factor 35 kDa subunit-related protein 2, CCCH type zinc finger, RNA-binding motif and serine/arginine rich protein 2, Renal carcinoma antigen NY-REN-20, U2(RNU2) small nuclear RNA auxiliary factor 1-like 2, U2AF35-related protein, U2AF1-RS2, U2AF1L2, U2AF1RS2, URP

### Source and Purity:

Rabbit polyclonal antibodies were produced by immunizing animals with a GST-fusion protein containing the C-terminal region of human ZRSR2. Antibodies were purified by affinity purification using immunogen.

### Storage Buffer and Condition:

Supplied in 1 x PBS (pH 7.4), 100 ug/ml BSA, 40% Glycerol, 0.01% NaN<sub>3</sub>. Store at -20 °C. Stable for 6 months from date of receipt.

### Species Specificity:

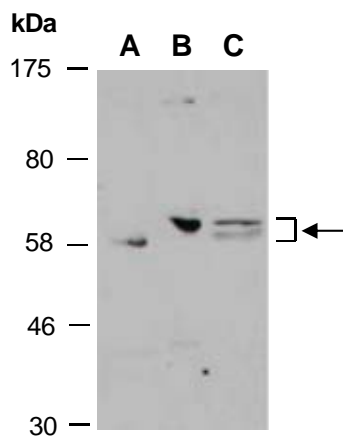
Human, Mouse

### Tested Applications:

WB: 1:1,000-1:3,000 (detect endogenous protein\*)

\*: The apparent protein size on WB may be different from the calculated M.W. due to modifications.

**Product Data:**



**Fig 1.** Western blot of total cell extracts from A) mouse thymus, B) human HeLa, C) human Jurkat; using anti-ZRSR2 (C1) (R2855-1) at RT for 2 h.