



Order: (888)-282-5810 (Phone)  
(818)-707-0392 (Fax)  
[order@abiocode.com](mailto:order@abiocode.com)  
Web: [www.Abiocode.com](http://www.Abiocode.com)

---

## **SRSF9 (M) Antibody, Rabbit Polyclonal**

**Cat#:** R2059-1

**Quantity:** 100 ul

**Predicted | Observed M.W.:** 26 kDa

**Lot#:** Refer to vial

**Application:** WB

**Uniprot ID:** Q13242

### **Background:**

Serine/arginine-rich splicing factor 9 (SRSF9) belongs to the splicing factor SR family and plays a role in constitutive splicing and can modulate the selection of alternative splice sites. SRSF9 also represses the splicing of MAPT/Tau exon 10.

### **Other Names:**

Serine/arginine-rich splicing factor 9, Pre-mRNA-splicing factor SRp30C, Splicing factor, arginine/serine-rich 9, SFRS9, SRP30C

### **Source and Purity:**

Rabbit polyclonal antibodies were produced by immunizing animals with a GST-fusion protein containing the middle region of human SRSF9. Antibodies were purified by affinity purification using immunogen.

### **Storage Buffer and Condition:**

Supplied in 1 x PBS (pH 7.4), 100 ug/ml BSA, 40% Glycerol, 0.01% NaN<sub>3</sub>. Store at -20 °C. Stable for 6 months from date of receipt.

### **Species Specificity:**

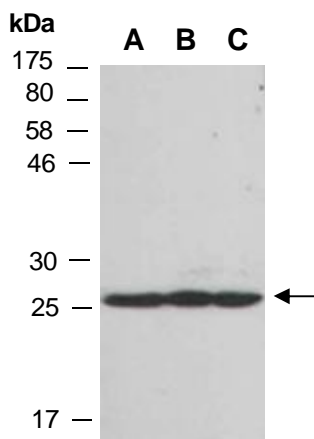
Human, Mouse

### **Tested Applications:**

WB: 1:1,000-1:3,000 (detect endogenous protein\*)

\*: The apparent protein size on WB may be different from the calculated M.W. due to modifications.

**Product Data:**



**Fig 1.** Western blot of total cell extracts from A) mouse thymus, B) human HeLa, C) human Jurkat; using anti-SRSF9 (M) (R2059-1) at RT for 2 h.