



Order: (888)-282-5810 (Phone)
(818)-707-0392 (Fax)
order@abiocode.com
Web: www.Abiocode.com

ABCC6 (C) Antibody, Rabbit Polyclonal

Cat#: R3006-2

Quantity: 100 ul

Predicted | Observed M.W.: 165 kDa

Lot#: Refer to vial

Application: WB

Uniprot ID: O95255

Background:

Multidrug resistance-associated protein 6 (ABCC6) is a multi-pass membrane protein belonging to the ABC transporter superfamily, the ABCC family, and the Conjugate transporter (TC 3.A.1.208) subfamily. ABCC6 may participate directly in the active transport of drugs into subcellular organelles or influence drug distribution indirectly. ABCC6 transports glutathione conjugates as leukotriene-c4 (LTC4) and N-ethylmaleimide S-glutathione (NEM-GS).

Other Names:

Multidrug resistance-associated protein 6, ATP-binding cassette sub-family C member 6, Anthracycline resistance-associated protein, Multi-specific organic anion transporter E, MOAT-E, ARA, MRP6

Source and Purity:

Rabbit polyclonal antibodies were produced by immunizing animals with a GST-fusion protein containing the C-terminal region of human ABCC6. Antibodies were purified by affinity purification using immunogen.

Storage Buffer and Condition:

Supplied in 1 x PBS (pH 7.4), 100 ug/ml BSA, 40% Glycerol, 0.01% NaN₃. Store at -20 °C. Stable for 6 months from date of receipt.

Species Specificity:

Human, Mouse

Tested Applications:

WB: 1:1,000-1:3,000 (detect endogenous protein*)

*: The apparent protein size on WB may be different from the calculated M.W. due to modifications.

Product Data:

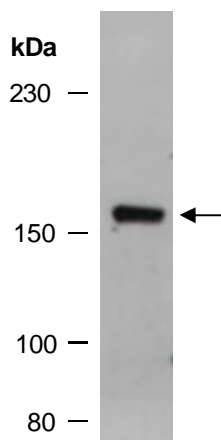


Fig 1. Western blot of total cell extracts from mouse thymus; using anti-ABCC6 (C) (R3006-2) at RT for 2 h.