



Order: (888)-282-5810 (Phone)
(818)-707-0392 (Fax)
order@abiocode.com
Web: www.Abiocode.com

MYH11 (C) Antibody, Rabbit Polyclonal

Cat#: R3529-2

Quantity: 100 ul

Predicted | Observed M.W.: 227 kDa

Lot#: Refer to vial

Application: WB

Uniprot ID: P35749

Background:

Myosin-11 (MYH11) is involved in muscle contraction and belongs to the TRAFAC class myosin-kinesin ATPase superfamily as well as the Myosin family. A chromosomal aberration involving MYH11 is found in acute myeloid leukemia of M4EO subtype.

Other Names:

Myosin-11, Myosin heavy chain 11, Myosin heavy chain, smooth muscle isoform, SMMHC, KIAA0866

Source and Purity:

Rabbit polyclonal antibodies were produced by immunizing animals with a GST-fusion protein containing the C-terminal region of human MYH11. Antibodies were purified by affinity purification using immunogen.

Storage Buffer and Condition:

Supplied in 1 x PBS (pH 7.4), 100 ug/ml BSA, 40% Glycerol, 0.01% NaN₃. Store at -20 °C. Stable for 6 months from date of receipt.

Species Specificity:

Human, Mouse

Tested Applications:

WB: 1:1,000-1:3,000 (detect endogenous protein*)

*: The apparent protein size on WB may be different from the calculated M.W. due to modifications.

Product Data:

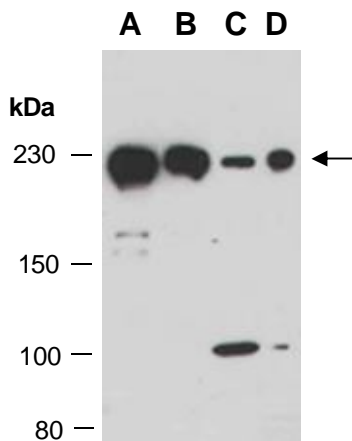


Fig 1. Western blot of total cell extracts from A) mouse brain, B) mouse thymus, C) human HeLa, D) human Jurkat; using anti-MYH11 (C) (R3529-2) at RT for 2 h.