



Order: (888)-282-5810 (Phone)  
(818)-707-0392 (Fax)  
[order@abiocode.com](mailto:order@abiocode.com)  
Web: [www.Abiocode.com](http://www.Abiocode.com)

---

## **MMP1 (C1) Antibody, Rabbit Polyclonal**

**Cat#:** R0293-4

**Quantity:** 100 ul

**Predicted | Observed M.W.:** 54 kDa

**Lot#:** Refer to vial

**Application:** WB

**Uniprot ID:** P03956

### **Background:**

Interstitial collagenase (MMP1) belongs to the peptidase M10A family and cleaves collagens of types I, II, and III at one site in the helical domain. MMP1 also cleaves collagens of types VII and X. In case of HIV infection, MMP1 interacts and cleaves the secreted viral Tat protein, leading to a decrease in neuronal Tat's mediated neurotoxicity.

### **Other Names:**

Interstitial collagenase, Fibroblast collagenase, Matrix metalloproteinase-1, MMP-1, CLG

### **Source and Purity:**

Rabbit polyclonal antibodies were produced by immunizing animals with a GST-fusion protein containing the C-terminal region of human MMP1. Antibodies were purified by affinity purification using immunogen.

### **Storage Buffer and Condition:**

Supplied in 1 x PBS (pH 7.4), 100 ug/ml BSA, 40% Glycerol, 0.01% NaN<sub>3</sub>. Store at -20 °C. Stable for 6 months from date of receipt.

### **Species Specificity:**

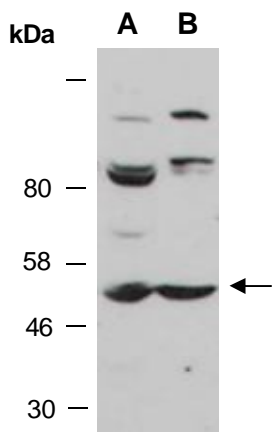
Human, Mouse

### **Tested Applications:**

WB: 1:1,000-1:3,000 (detect endogenous protein\*)

\*: The apparent protein size on WB may be different from the calculated M.W. due to modifications.

**Product Data:**



**Fig 1.** Western blot of total cell extracts from A) mouse thymus, B) human HeLa; using anti-MMP1 (C1) (R0293-4) at RT for 2 h.