



Order: (888)-282-5810 (Phone)
(818)-707-0392 (Fax)
order@abiocode.com
Web: www.Abiocode.com

SPTBN1 (N) Antibody, Rabbit Polyclonal

Cat#: R1662-1

Quantity: 100 ul

Predicted | Observed M.W.: 275 kDa

Lot#: Refer to vial

Application: WB

Uniprot ID: Q01082

Background:

Spectrin beta chain, non-erythrocytic 1 (SPTBN1) is a peripheral membrane protein belonging to the spectrin family. SPTBN1, which seems to be involved in secretion, interacts with calmodulin in a calcium-dependent manner and is thus candidate for the calcium-dependent movement of the cytoskeleton at the membrane.

Other Names:

Spectrin beta chain, non-erythrocytic 1, Beta-II spectrin, Fodrin beta chain, Spectrin, non-erythroid beta chain 1, SPTB2

Source and Purity:

Rabbit polyclonal antibodies were produced by immunizing animals with a GST-fusion protein containing the N-terminal region of human SPTBN1. Antibodies were purified by affinity purification using immunogen.

Storage Buffer and Condition:

Supplied in 1 x PBS (pH 7.4), 100 ug/ml BSA, 40% Glycerol, 0.01% NaN₃. Store at -20 °C. Stable for 6 months from date of receipt.

Species Specificity:

Human, Mouse

Tested Applications:

WB: 1:1,000-1:3,000 (detect endogenous protein*)

*: The apparent protein size on WB may be different from the calculated M.W. due to modifications.

Product Data:

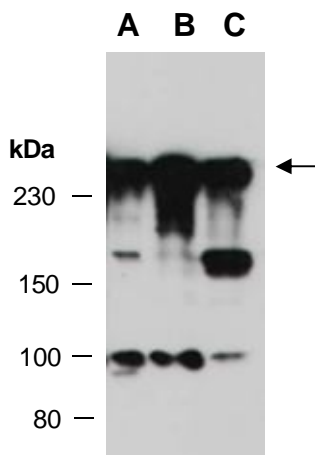


Fig 1. Western blot of total cell extracts from A) mouse thymus, B) human HeLa, C) human Jurkat; using anti-SPTBN1 (N) (R1662-1) at RT for 2 h.