



Order: (888)-282-5810 (Phone)
(818)-707-0392 (Fax)
order@abiocode.com
Web: www.Abiocode.com

SMAD1 (N) Antibody, Rabbit Polyclonal

Cat#: R1167-1

Quantity: 100 ul

Predicted | Observed M.W.: 52 | 60 kDa

Lot#: Refer to vial

Application: WB

Uniprot ID: Q14797

Background:

Mothers against decapentaplegic homolog 1 (SMAD1) belongs to the dwarfin/SMAD family and is a transcriptional modulator activated by BMP (bone morphogenetic proteins) type 1 receptor kinase. SMAD1 is a receptor-regulated SMAD (R-SMAD). SMAD1/OAZ1/PSMB4 complex mediates the degradation of the CREBBP/EP300 repressor SNIP1.

Other Names:

Mothers against decapentaplegic homolog 1, BSP1, MADH1, MADR1, MAD homolog 1, Mothers against DPP homolog 1, JV4-1, Mad-related protein 1, SMAD family member 1, SMAD 1, Smad1, hSMAD1, Transforming growth factor-beta-signaling protein 1, BSP-1

Source and Purity:

Rabbit polyclonal antibodies were produced by immunizing animals with a GST-fusion protein containing the N-terminal region of human SMAD1. Antibodies were purified by affinity purification using immunogen.

Storage Buffer and Condition:

Supplied in 1 x PBS (pH 7.4), 100 ug/ml BSA, 40% Glycerol, 0.01% NaN₃. Store at -20 °C. Stable for 6 months from date of receipt.

Species Specificity:

Human

Tested Applications:

WB: 1:1,000-1:3,000 (detect endogenous protein*)

*: The apparent protein size on WB may be different from the calculated M.W. due to modifications.

Product Data:

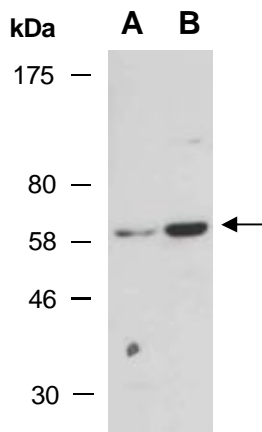


Fig 1. Western blot of total cell extracts from from A) human HeLa; B) human Jurkat; using anti-SMAD1 (N) (R1167-1) at RT for 2 h.