



Order: (888)-282-5810 (Phone)
(818)-707-0392 (Fax)
order@abiocode.com
Web: www.Abiocode.com

CRY1 (C) Antibody, Rabbit Polyclonal

Cat#: R3516-2

Quantity: 100 ul

Predicted | Observed M.W.: 77 kDa

Lot#: Refer to vial

Application: WB

Uniprot ID: Q43125

Background:

CRY1 mediates blue light-induced gene expression through the inhibition of COP1-mediated degradation of the transcription factor BIT1. CRY1 is involved in blue light-dependent stomatal opening, CHS gene expression, inhibition of stem growth and increase of root growth.

Other Names:

Cryptochrome-1, Blue light photoreceptor, Protein BLUE LIGHT UNINHIBITED 1, Protein ELONGATED HYPOCOTYL 4, Protein OUT OF PHASE 2, OOP2, BLU1, HY4, At4g08920, T3H13.14, T3H13.5

Source and Purity:

Rabbit polyclonal antibodies were produced by immunizing animals with a GST-fusion protein containing the C-terminal region of *arabidopsis thaliana* CRY1 (AT4G08920). Antibodies were purified by affinity purification using immunogen.

Storage Buffer and Condition:

Supplied in 1 x PBS (pH 7.4), 100 ug/ml BSA, 40% Glycerol, 0.01% NaN₃. Store at -20 °C. Stable for 6 months from date of receipt.

Species Specificity:

Arabidopsis thaliana

Tested Applications:

WB: 1:500-1:2,000 (detect endogenous protein*)

*: The apparent protein size on WB may be different from the calculated M.W. due to modifications.

Product Data:

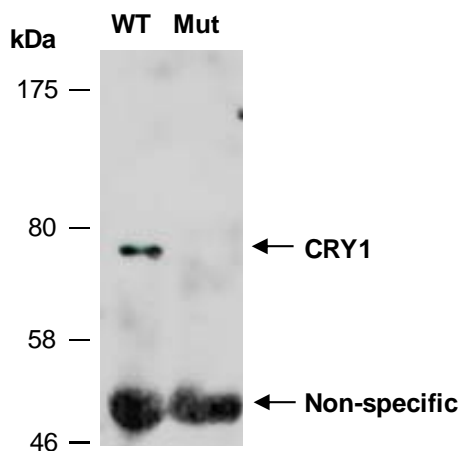


Fig 1. Western blot analysis of equal amounts of protein extracts from wild type (WT) or CRY1-deficient mutant Arabidopsis leaves harvested 2 h post light stimulation under the long-day photoperiod condition, using anti-CRY1 (C) (R3516-2) at RT for 2 h.