



Order: (888)-282-5810 (Phone)  
(818)-707-0392 (Fax)  
[order@abiocode.com](mailto:order@abiocode.com)  
Web: [www.Abiocode.com](http://www.Abiocode.com)

---

## ROP6 (C) Antibody, Rabbit Polyclonal

**Cat#:** R2142-1

**Quantity:** 100 ul

**Predicted | Observed M.W.:** 22 kDa

**Lot#:** Refer to vial

**Application:** WB

**Uniprot ID:** Q38912

### **Background:**

Inactive GDP-bound Rho GTPases reside in the cytosol, are found in a complex with Rho GDP-dissociation inhibitors (Rho GDIs), and are released from the GDI protein in order to translocate to membranes upon activation. ROP6 is a GTPase that may be involved in cell polarity control during the actin-dependent tip growth of root hairs.

### **Other Names:**

Rac-like GTP-binding protein ARAC3, GTPase protein ROP6, ARAC3, RAC1

### **Source and Purity:**

Rabbit polyclonal antibodies were produced by immunizing animals with a GST-fusion protein containing the C-terminal region of *arabidopsis thaliana* ROP6 (At4g35020). Antibodies were purified by affinity purification using immunogen.

### **Storage Buffer and Condition:**

Supplied in 1 x PBS (pH 7.4), 100 ug/ml BSA, 40% Glycerol, 0.01% NaN<sub>3</sub>. Store at -20 °C. Stable for 6 months from date of receipt.

### **Species Specificity:**

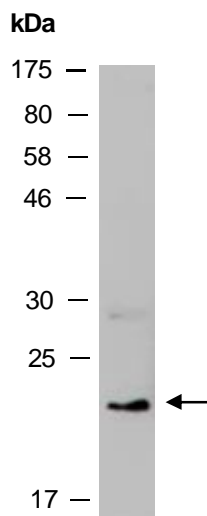
*Arabidopsis thaliana*

### **Tested Applications:**

WB: 1:500-1:2,000 (detect endogenous protein\*)

\*: The apparent protein size on WB may be different from the calculated M.W. due to modifications.

**Product Data:**



**Fig 1.** Western blot analysis of total protein extracts from wild type arabidopsis leaves, using anti-ROP6 (C) (R2142-1) at RT for 2 h. This Ab was used in studies described in Xu T et al., *Science* 2014, 343:1025-8.